



Safety Matters

ANNUAL SECURITY REPORT

Table of Contents

MESSAGE FROM THE PRESIDENT 2

REPORTING

Police Services 3

Crime Reporting 3

Crime Disclosure 4

Campus Security Authorities 6

Timely Warnings 7

Missing Student Notification 8

SAFETY

Harassing Phone Calls 8

Medical Emergencies 9

Natural Disasters 9

Facilities Access 10

Lost and Found 10

Transportation 11

Homeland Security 12

PREVENTION

Alcohol and Drug Awareness 13

Crime Prevention 13

Safety Tips 14

Suicide Prevention 15

SEXUAL VIOLENCE

Definitions 17

What to do if you are a victim 19

Support Services 19

Student Conduct Process 21

On- and Off-Campus Resources 22

Victim Bill of Rights 23

Definitions under Oklahoma Law 23

Preventative Measures 27

Sex Offender Registration 28

STATISTICS

Report of Statistics 28

Definitions of Criminal Offenses 28

Definition of Terms for Statistical Charts 30

Crime Statistics 32

FIRE

Annual Fire Safety Report 36

Housing and Residential Life Fire Safety Policies 37

Fire Safety 39

Fire Statistics 40

Fire Safety Report (Student Housing and Fire Safety Systems
and Fire Drills) 52

OTHER RESOURCES 65

MESSAGE FROM OSU PRESIDENT BURNS HARGIS



The security of our campus and the safety of students, employees and visitors are of utmost importance to all of us at

Oklahoma State University. The university invests significant personnel and resources to keep the campus one of the safest in the region and to comply with all federal regulations and laws.

The primary focus of our work is education, which includes ensuring that students and employees educate themselves about personal safety and the safety of those around them.

We offer training and resources through the OSU Police Department, the Department of Environmental Health and Safety, Division of Student Affairs, Human Resources and other areas.

One of the most important safety tools is communications. Our Cowboy Alert system is available to all students and employees and is our primary method of communicating in a

weather event or other emergency. To sign up for Cowboy Alert, go to safety.okstate.edu.

While OSU works hard to provide a higher level of safety, the best defense against crimes and accidents is to be informed and educated on personal safety, be aware of your surroundings and report suspicious activity to proper authorities.

I hope you will join me in keeping OSU a safe and welcoming campus.

A handwritten signature in dark ink, reading "Burns Hargis". The signature is fluid and cursive, with the first letters of the first and last names being capitalized and prominent.

V. Burns Hargis

Reporting

POLICE SERVICES

The OSU Police Department is an accredited policing agency, initially accredited by the Oklahoma Association of Chiefs of Police (OCAP) in 1998. The first agency in the state of Oklahoma to become accredited, the OSU Police Department continues to be a leading professional organization by adhering to the best policing practices as prescribed in the accreditation standards.

The OSU Police Department serves a community of approximately 26,000 faculty, staff and students. OSU is located in the city of Stillwater and covers approximately 840 square acres on the main campus, including over 180 buildings plus outlying agricultural and recreational areas. The department's overall strength (authorized positions) is 33 sworn officers who have full enforcement and arrest authority on the OSU campus. The men and women of the OSU Police Department attend the same state police basic academy as most other law enforcement agencies in Oklahoma. To provide the best services possible to the OSU community, OSU Police have mutual aid agreements with both the Stillwater Police Department and the Payne County Sheriff's Office, allowing for cooperation in enforcement activities. Some low-threat duties, such as entrance assists, the SafeWalk escort program, and selected security assignments, are accomplished with student public service officers.

OSU police officers provide a positive image to visitors and members of the campus community, whether it is providing directions, parking information or just a friendly welcome. Our officers represent this university as a group of caring and professional people, intent upon enhancing a friendly community atmosphere. Necessary enforcement includes using alternatives to arrest when reasonable. Our

participation in athletic and special events ensures that all aspects of planning consider the safety and security of all participants. OSU police officers provide professional crowd control and traffic regulation before, during, and after such events.

Students and staff find our office willing to share statistics, insights and experiences as a basis for class reports or vocational interests. OSU police managers seek proactive means to avoid problems and situations, whether it is suggesting additional security measures, providing insight on planned activities or using investigative analysis to determine a deterrent force.

For the OSU Police Department, service is a way of life. Services such as motorist assists, money transports and emergency message notifications are handled routinely. OSU's blue emergency phone system is still being copied by other universities, although our network has been operating for over 25 years.

OSU police provide programs aimed at promoting seatbelt use, prevention of "texting while driving" and educating our residents, primarily the students, about the effects and penalties of alcohol use and abuse. A positive effect of the effort has been the strict enforcement of alcohol-related laws, which has been dramatic in getting drunk drivers off campus streets and ultimately preventing accidents. This effort continues, in part, with an emphasis on preventing underage drinking.

Thousands of visitors, campers, fishermen and sightseers visit Lake Carl Blackwell and its surrounding recreational areas. OSU police officers provide them with friendly and proficient police protection, including lake-patrol and rescue operations on the water. While the OSU Police Department will respond to calls for service at Lake Carl Blackwell year-round, two

officers are typically dedicated to lake patrol duty from Memorial Day weekend through Labor Day weekend.

Overall, the OSU Police Department believes in providing proactive law enforcement and service to the university community.

CRIME REPORTING

Crime victims and witnesses to a crime, regardless of the crime, are encouraged to promptly report incidents to the OSU Police Department or other appropriate police agency. To report a crime, the victim or witness can call the police phone number and a police officer will meet them to gather information, or they can make an iReport through the OSU safety app. An official report is then made, with copies available to the victim after a completed investigation. Each business day the incidents from the previous day, excluding names, are summarized and made available to the public, key OSU staff, other law enforcement agencies and the media. The public can access the daily activity summary via the internet by visiting the OSU Police Department website (police.okstate.edu) and clicking on the Activity Summaries tab.

Each month, the number of incidents in each category of crime are counted and reported to the Oklahoma State Bureau of Investigation, which in turn provides the information to the Federal Bureau of Investigation. These statistics are published and available to the public at osbi.ok.gov/statistical-analysis-center/data-and-statistics.

Each year, the FBI publishes a book of crime statistics called Crime in the United States, which includes accurate accounting of the criminal incidents that occurred on the OSU campus. OSU has reported crime statistics in this

manner since the FBI began publishing campus crime statistics in 1971.

CRIMES IN PROGRESS

To report a crime in progress, a victim or witness can dial 911, use one of the blue emergency telephones, use the Orange Shield safety app, or call one of the listed police phone numbers. Any reporting method will initiate the response of police, fire, ambulance or other first responders. In addition, the victim of a serious crime can request support personnel, such as ministers, victim advocates or counselors, during or after reporting the incident.

Additionally, crime victims may be eligible for funds through victims' compensation laws administered by the local district attorney. See ok.gov/dac/Victims/Victims_Compensation_Program/ for more information.

Prompt reporting of criminal activity to the police enables a quick response, a timely warning if warranted, and makes the campus safer for everyone. So if you see something, say something!

IF YOU ARE THE VICTIM OF A CRIME OR WITNESS TO ONE, YOU SHOULD DO THE FOLLOWING:

1. Call the police immediately:
405-744-6523 or 311 (from campus phones)
911 (for emergencies)
Orange Shield safety app
405-744-TIPS (8477)
2. Obtain a description:

Attempt to obtain a description of the offender, including gender, age, race, hair, clothing, and distinguishable features. It is common for many people to have a cell-phone with a camera, and a photo of a suspect can be an invaluable aid to the investigation. Also attempt to obtain a description and license number of any vehicle involved. Again, a photograph can be a tremendous aid in locating and apprehending a suspect. Note the direction of travel of any offender or vehicle, and report these to the police. If using the Orange Shield safety app, pictures or video can be transmitted directly to the OSU Police Department via the iReport feature of the app and the caller/user can remain anonymous if desired.

3. Preserve the crime scene:

Do not touch any items involved in the incident. Close off the area and do not allow anyone in the crime area until police arrive.

TYPES OF CRIMES REPORTED TO POLICE:

- **SEXUAL ASSAULT:** If you have been sexually assaulted, you should seek medical treatment immediately, regardless of whether you report the matter to the police. In order to preserve the physical evidence, do not bathe, douche, use the toilet or change clothing. If you are a sexual assault victim, it is best to report it to the police immediately.
- **TELEPHONE HARASSMENT:** Obscene or threatening telephone calls should be reported to the police immediately. Other harassing phone calls should be reported if they persist. If you receive such a call, remain calm and hang up. Always record the exact time and date you received the call. This information will assist police investigators.

- **BOMB THREATS:** If you know of a bomb threat, contact the OSU Police Department at 911 or use the Orange Shield safety app. Notify your supervisor, department head or community mentor and wait for further instructions. Record as much information about the call as you can remember.
- **BURGLARY AND LARCENY:** Property crimes are the highest reported crimes on the OSU campus. To aid police in locating property, we recommend you always record the serial numbers of any items of value (such as computers, cellphones, televisions, etc.). If you feel you have been a victim of a property crime, report the incident immediately to the OSU Police Department at 405-744-6523 or use the Orange Shield safety app.
- **ASSAULT AND BATTERY:** The best thing to do when confronted in an assault and battery situation is to try to escape and immediately notify the police by dialing 911, activating a blue phone or using the Orange Shield safety app.
- **OTHER CRIMES:** There are many other crimes that occur on campus. Generally, you should protect yourself and others and report information to police as soon as practical.

CRIME DISCLOSURE

Oklahoma State University policies and procedures require the publication of annual crime statistics. Included in this report are crimes reported to the Campus Police and other campus officials including, but not limited to, Athletics, University Health Services, Housing and Residential Life, and Student Conduct Education and Administration. Community members may report crimes anonymously through Crime Stoppers. The Orange Shield safety app also

provides a mechanism to report crimes anonymously by using the iReport feature within the app.

CONFIDENTIAL REPORTING OF CRIME

Confidential reporting is allowed at Oklahoma State University. If a person does not wish to report an on-campus crime or suspected crime to the police, that person may anonymously report it to the Crime Stoppers Program, or utilize the iReport feature of the Orange Shield safety app.

REPORTING SUSPICIOUS ACTIVITY

- If you see any suspicious activity or persons on or near the campus, it is your responsibility to call the OSU Police at 405-744-6523, 311, or 911 for emergencies, or use the Orange Shield safety app. You can also use one of the many blue light emergency telephones located across campus.
- Do not assume what you see is an innocent activity or that another individual has already called the police. Do not worry about being embarrassed; rather, think about what could happen if you do not act.

SUSPICIOUS PERSONS MAY INCLUDE:

- Someone loitering about at unusual hours and locations.
- Someone running, especially if they are carrying something of value.
- Someone exhibiting unusual mental or physical symptoms. They could be under the influence of drugs or needing medical or psychiatric assistance.
- Someone carrying property that might be suspicious, depending on the circumstances.

- Someone going from room to room, or car to car, trying door handles.
- Someone going from door to door trying to gain access into a building.

OTHER UNUSUAL SITUATIONS:

- Threatening statements, disturbing images or video posted on digital platforms that may appear to be a threat to the safety of an individual, group or the campus community.
- Open or broken doors or windows.
- Unusual noises — anything suggestive of foul play, danger or illegal activity.
- Someone sitting in a parked vehicle for an extended period of time.
- Vehicles driving slowly in a parking lot or parking garage at night.
- Any person not affiliated with the university community in an area not typically associated with visitors or the public.
- Do not assume the person may be a visitor or university staff that you have not seen before. Call the OSU Police Department immediately.

STEPS TO FOLLOW TO ENSURE THE SAFETY OF YOUR BICYCLE:

1. Register your bicycle with Parking and Transit Services.
2. Engrave your student identification number on your bicycle, and keep a record of the bicycle serial number.
3. Lock your bicycle at a bike rack.

4. Use a high quality “U” bolt lock and/or a quality chain or cable and lock. Place the chain, cable, or lock through both wheels, the frame, and around the bicycle rack. Take the front wheel and/or seat with you, if removable.
5. Always lock your bicycle when not in your physical control.
6. If your bicycle is stolen, contact OSU Police or local municipal police immediately.

JUVENILE CURFEW

In order to better provide for public safety on the OSU campus, a juvenile curfew is in place. Generally, persons under 18 years of age are not allowed to roam, loiter, bicycle, skateboard, rollerblade or otherwise linger on campus between the hours of 11 p.m. to 6 a.m. Sunday through Thursday, and 12 midnight to 6 a.m. Friday and Saturday nights.

Exceptions:

- OSU students or staff.
- Juveniles escorted by parents or adult guardian.
- Juveniles escorted by students, faculty, or staff.
- Juvenile residents of university apartments en route between apartments, automobiles to apartments, or while performing a task directed by a parent or guardian.

Sanctions:

FIRST OFFENSE — Apprehension, informed of the curfew and warned.

SECOND OFFENSE — Apprehension, call parents, release to parents and issued “notice to vacate campus.”

THIRD OFFENSE — Apprehension, arrest for violation of trespassing as defined in Oklahoma Statutes Title 21, Section 1376. This applies to non-university apartment residents.

BLUE PHONES

Oklahoma State University has more than 75 blue emergency telephone stations throughout campus. From these phones you can contact OSUPD and an officer will respond.

REPORTING BEHAVIOR OFF CAMPUS

Student Affairs maintains contact with recognized fraternity and sorority organizations through the efforts of the assistant director of Fraternity and Sorority Affairs. The OSU Police Department does not provide law enforcement service to off-campus residences of recognized fraternity and sorority organizations. Criminal activity at recognized fraternity and sorority residences is monitored and recorded by the Stillwater Police Department. Student Affairs and OSU Police enjoy a close working relationship with the Stillwater Police when violations of federal, state or local laws surface.

CAMPUS SECURITY AUTHORITIES

CAMPUS SECURITY AUTHORITIES INCLUDE:

1. Any employee of the campus police department or campus security department of Oklahoma State University.
2. Any individual who has responsibility for campus security but who is not a member of the campus police department or the campus security department (e.g. parking enforcement staff, campus safety escort staff and special event venue security).

3. Any individual specified in the university's statement of campus crime security policy as an individual to which students and employees should report criminal offenses.
4. Any individual of the university who has significant responsibility for student and campus activities (e.g. student housing, student discipline, athletic directors/coaches and campus student judicial officials).

THE FOLLOWING INDIVIDUALS ARE DESIGNATED AS CAMPUS SECURITY AUTHORITIES:

Department of Public Safety

Director of Public Safety
All sworn police officers
All communication officers
Public service officers

Department of Parking & Transportation Services

Parking professional staff
Bus drivers
Student parking regulation enforcers

Athletic Department

Director of Athletic Programs
Assistant/associate athletic directors
Head coaches for athletic teams
Assistant/associate coaches for athletic teams
Graduate assistants for athletic teams
Athletic academic support professional staff
Athletic trainers

Colleges

Deans
Academic advisers
Commissioned officers and faculty of military science

Division of Student Affairs

Vice President for Student Affairs
Director of the Student Union
Meeting and conference services professional staff and building managers
Leadership and Campus Life professional and graduate staff
Advisers for student organizations (affiliated with the university)
Student Union parking staff
Career Services professional and graduate staff
Student Conduct professionals and graduate staff
Director of University Counseling Services
Student Disability Services professional and graduate staff
Victim advocates
Department of Wellness professional and graduate staff
Director of University Health Services
Housing and Residential Life professional and graduate staff
Residence Hall mentor staff and desk clerks

Music Department

Director of Bands
Associate/assistant directors of bands
Graduate assistants for bands

Institutional Diversity

Diversity Academic Support/TRiO professional staff

Multicultural Affairs professional staff

Other

Title IX coordinator and investigator

Equal Opportunity director

Human Resources consultants

Ombudsperson

TIMELY WARNINGS

The OSU Police Department carefully reviews all reports of criminal activity and, when appropriate, warns the OSU community of serious crimes or threats occurring on or near campus.

Upon completion of reviewing all information, OSU Police may provide warnings to the OSU community. These warnings are typically sent through the Cowboy Alert system (text, voice, email and social media), and may be posted on the Campus Safety website located at safety.okstate.edu. Depending on the nature and level of the threat, other forms of media may be also used to disseminate timely warnings. These may be sent via voicemail or to campus email accounts. Timely warnings will be made as soon as is safely practical.

The OSU Police Department, the vice president for administration and finance or designee, and the public information officer are typically the ones who deliver information to university administration. Upon receiving information, administration will, without delay and taking into account the safety of the community, determine the content of any timely warning and initiate a notification, unless issuing a notification will, in the professional judgement of the responsible authorities, compromise efforts to assist a victim or to contain, respond to or otherwise mitigate the threat.

EMERGENCY NOTIFICATION SYSTEM

In the event of a campus emergency, Oklahoma State University may use a variety of tools to communicate to the campus and the public. Depending on the nature of the emergency, OSU may use all or some of the following:

- **TEXT AND VOICE ALERTS** — The “Cowboy Alert” system is available to all campus faculty, staff and students. You may register your cell phone to receive a text message and/or voicemail through your O-key account at okey.okstate.edu.
- **SIREN SYSTEM** — Sirens are tested around 11:30 a.m. on the first Tuesday of every month. They can deliver a siren warning and/or public address announcement in the event of certain emergencies.
- **PA SYSTEM** — Various campus buildings have PA systems that can alert those in the building of an emergency situation and provide response details.
- **UNIVERSITY GROUP EMAIL** — The university may send “urgent” e-mails to the entire campus providing notification and directions during an emergency.
- **SOCIAL MEDIA** — OSU may use Facebook, Twitter and/or other social media tools to provide updates on campus closures or emergency situations.
- **CABLE TV/CAMPUS MONITORS** — OSU has the ability to override the campus cable system, providing emergency notification via the campus TV system in many university buildings and residential housing.
- **LOCAL MEDIA** — The OSU Communications office works with local media — radio, television, and newspapers — to help announce and update campus closures or emergency situations.

- **WEATHER RADIOS** — Various offices across campus have weather radios that provide the latest in severe weather information.
- **PATROL CAR ANNOUNCEMENTS** — Campus police vehicles are equipped with PA systems that allow officers to communicate during emergencies.
- **CALLING TREES** — Many university departments and organizations have call trees in place to notify their employees and students of an emergency situation.
- **CAMPUS SAFETY WEBSITE** — You may want to bookmark safety.okstate.edu, which provides links to a variety of safety information and will be updated with details during actual emergencies or campus closures.

The OSU Police Department, the vice president for administration and finance or designee, and the public information officer are typically the ones who deliver information to university administration. Upon receiving information, administration will, without delay and taking into account the safety of the community, determine the content of any emergency notification and initiate a notification, unless issuing a notification will, in the professional judgement of the responsible authorities, compromise efforts to assist a persons on campus or to contain, respond to or otherwise mitigate the threat.

In emergency situations where immediate action is required, OSU Police may activate sirens and employ other resources.

The Oklahoma State University campus could be subjected to a situation requiring evacuation at any time. Because of this, the OSU Department of Public Safety has developed an

evacuation plan in collaboration with a number of university and community partners. The plan was developed to outline an evacuation procedure that protects the health, safety and welfare of all students, faculty, staff and visitors. The authority to issue a campus evacuation order rests with the president of the university or designee and is based on the situational observations by the OSU Department of Public Safety. In conjunction with an evacuation order, the University Emergency Operations Center will be activated and will lead and manage the process. In addition to notifying the campus community, the university will also inform the local community as soon as reasonably practical. OSU Communications will coordinate all messaging to both on- and off-campus communities as well as media outlets. OSU's manager of emergency operations works with the university's Information Technology Department, the City of Stillwater and Payne County to maintain our emergency communication system(s) and schedules routine tests on at least an annual basis of each method available to the campus.

MISSING STUDENT NOTIFICATION

In accordance with Section 485 of the Higher Education Act, 20 U.S.C. § 1092(j), Oklahoma State University has developed this investigation and notification policy regarding students who reside in on-campus housing and have been reported as missing.

Any report to a university official or campus security authority indicating that a student who resides in on-campus housing is missing shall be referred immediately to the Oklahoma State University Police Department, and an investigation shall be conducted. If the initial investigation

determines that the student is missing, the following persons shall be notified:

1. *A confidential contact person designated by the student.*

Students have the option of identifying a person of their choice to be contacted in the specific case they are determined missing. Students can choose to identify the same person as their general emergency contact or identify a different person who is more likely to know their whereabouts if determined missing (for example, a roommate, close friend or in-town relative might be more familiar with an individual's daily movements than out-of-town family or friends). Their choice can be entered as a Confidential Contact and kept updated on their O-Key account services page at okey.okstate.edu. The designated person and their contact information shall be considered confidential and is only to be accessed by university officials after the student has been reported missing. This confidential contact person database can be used by any OSU student, whether they live on-campus or not.

2. *The student's custodial parent(s) or legal guardian(s), if the student is under 18 and not an emancipated minor.*

3. *Local law enforcement authorities.*

The Oklahoma State University Police Department will work with other law enforcement agencies, if necessary, once a student is determined to be missing.

4. *Others*

University officials may elect to notify additional persons determined to be appropriate and consistent with the Family Educational Rights and Privacy Act, 20 § 1232(g).

IMPORTANT: Students are encouraged to share pertinent information with family and friends when leaving campus or taking trips. Sharing this information will enable university staff, as well as family and friends, to contact them if the need arises. In addition, students are encouraged to periodically update their emergency contact information in O-Key.

Safety

HARASSING PHONE CALLS, TEXTS AND EMAILS

Harassment by telephone, text message, email or other means is both a nuisance and a crime. It will not be tolerated on the Oklahoma State University campus.

IF YOU ARE A VICTIM OF TELEPHONE HARASSMENT, PLEASE FOLLOW THESE STEPS:

1. As soon as you realize the nature of the call, **HANG UP**. Remain calm.
2. Do not talk or try to discover the caller's identity.
3. If calling persists, or if any call is obscene or threatening, call OSU Police at 405-744-6523, or use the Orange Shield safety app. If off-campus, call the agency within the jurisdiction you are located and report the activity.
4. If calling persists, keep a time log of calls received, what was said by all parties and a description of the voice.

IF YOU ARE A VICTIM OF HARASSMENT VIA TEXT MESSAGING OR EMAIL, FOLLOW THESE STEPS:

1. Do not attempt to respond or otherwise interact with the suspect once an initial notification to cease messaging has been made.
2. Do not delete the messages; they will be important as evidence during an investigation.
3. Contact the OSU Police to file a report, or contact your local law enforcement agency if you are off-campus.
4. Keep a log of the message dates and times to aid in retrieving messages as evidence when filing a report.

MEDICAL EMERGENCIES

STEPS TO TAKE IN MEDICAL EMERGENCIES:

1. Do not move the patient unless his or her life is in danger.
2. Have someone stay with the patient until help arrives.
3. Call 911 or use the Orange Shield safety app. Tell them your name, your exact location, and a brief description of the problem. Do not hang up until told to do so.
4. Meet emergency personnel to guide them to the patient.

MEDICAL ILLNESS AND MINOR INJURIES

The OSU University Health Services is a primary outpatient health care facility designed to provide cost-effective health care and health information to students at Oklahoma State University.

ELIGIBILITY

Students who are currently enrolled at Oklahoma State University and who have paid the required Student Health Fee are eligible. Non-enrolled spouses of students can also use all services of the University Health Services by paying the health fee. Students who have questions concerning eligibility can contact the University Health Services business office at 405-744-7013.

HOURS ACCESSIBLE:

8 a.m.-5 p.m. Monday through Friday throughout the year (except during university closures such as holidays and weather closures)



UNIVERSITY HEALTH SERVICES PROVIDES:

1. Outpatient services for students, including immunizations and flight physicals.
2. Pharmacy, x-ray, and laboratory services.
3. Women's Clinic by appointment.
4. Allergy injections by appointment.
5. Consultations and referrals to other medical specialties.

For appointments call 405-744-7665.

For all other medical services or major medical emergencies, go to the Stillwater Medical Center Emergency Room, located at 1323 W. 6th St. in Stillwater or call 405-372-1480 for further information.

NATURAL DISASTERS

The following information is offered as a guideline to aid you in determining what action you should take in the event of severe weather.

Tornado WATCH: Conditions are such that storms capable of producing a tornado may develop.

Tornado WARNING: Either a tornado has been sighted or, in cases of limited visibility it is highly probable that one has developed or is imminent. A warning will be signaled by the storm warning sirens.

The **TORNADO TAKE COVER SIGNAL** is a 3- to 5-minute STEADY sound on the storm sirens. This signal will sound on the large sirens located in the 1511 W. McElroy area (University Apartments), Seretean Center, Life Sciences North, 618 N. Monroe, 224 N. Orchard St., Lake Carl Blackwell (Hunts Meadow area), Camp Redlands and those installed

throughout the City of Stillwater. If the sirens sound again, it is further warning — **NOT** an all-clear signal.

NOTE: The storm sirens are tested the first Tuesday of each month, weather permitting, at 11:30 a.m.

When the National Weather Service issues a **“TORNADO WARNING”** for a possible tornado within a 10-mile radius of the campus, an automatic **“COWBOY ALERT”** text message is sent.

Persons should seek **IMMEDIATE** refuge in a basement or lower floor, interior corridors or interior rooms. If you are in an open-span area such as a gymnasium, auditorium or warehouse, go to the wall farthest from windows or glass, crouch down against the wall and protect your head with your arms. **STAY AWAY** from windows and exterior doors. If caught outside a building, lie flat on the ground, face down, preferably in a ditch or depression, but be alert for flash floods.

OSU Police will open designated **“SEVERE WEATHER REFUGE”** areas in case of storm activity after regular hours. Use caution when traveling to these buildings. A list of designated **“SEVERE WEATHER REFUGE LOCATIONS”** areas can be found at: safety.okstate.edu, under the *Weather Safety* tab.

Persons with disabilities and who are mobility impaired must also make plans. If a power outage occurs during severe weather, elevators may not work. Always go to an interior room or closet.

If local radio is available, keep tuned to KSPI-FM (93.7 MHz) or KOSU-FM (91.7 MHz) for storm details. The **“ALL CLEAR”** signal is given over FM radio and **NOT** the storm sirens. Stillwater Emergency Operations Center also broadcasts storm warnings over local cable television.

In case of **LIGHTNING**, OSU has installed and utilizes its own lightning detection and notification system to determine the proximity of lightning to OSU. When lightning is detected within 8 miles of the OSU campus (indicated by an audible horn and strobe light flashing on top of the Outdoor Alerting System, which will remain flashing until an “all clear” is sounded), the warning device will sound a solid 15 second horn blast from the OSU/Weatherbug Outdoor Alerting Systems located at the OSU Soccer Field (West end of Residential Life S-41), OSU outdoor track, Colvin Center Intramural Field (located on top of Wellness Center), North Intramural Field (located on the Southwest Corner of the Fire Publications building), Colvin Center swimming pool/tennis courts and at the Cowboy baseball fields. An “all clear” is announced by *three* short 5-second horn blasts and the strobe light on each device will turn off.

FACILITIES ACCESS

Oklahoma State University is comprised of many buildings that serve varied functions and satisfy the diverse needs of its students, faculty and staff. These facilities are readily accessible to students, faculty and staff during normal working hours.

It is OSU policy to lock the doors of buildings that are not in use. Many buildings, including residence halls, have key or electronic door locks for after-hours security. However, when working or studying in buildings after normal working hours, it is suggested that individual offices be locked, based upon the assumption that unrestricted access to the building is possible.

Some buildings on campus are rarely locked, at the department’s request, since students study and work on projects all hours of the day and night. Again, individual offices should be locked by the user on the presumption that the building is accessible.

Residence hall entrances are generally locked 24/7 and can only be opened by a resident’s student identification card or key. Main entrances are open at various times when the front desk is staffed. Residents residing in apartments are responsible for locking their doors. For questions regarding the open-door schedule, email reslife@okstate.edu. Instances of propped doors have occurred and compromise the safety and security of all residents. Residents are encouraged to take proactive security precautions by shutting propped doors when they are found. Individual rooms should be locked at all times for your safety.

PERSONS WITH DISABILITIES

If a classroom, office or meeting space is physically inaccessible, contact Student Disability Services for information and assistance at 405-744-7116.

LOST AND FOUND

The Oklahoma State University Police Department maintains a Lost and Found for items turned in to police department staff. Additionally, there are lost and found areas located in many other campus buildings, such as the Student Union, Edmon Low Library and the Colvin Recreational Center. After a certain period of time, all buildings and offices are encouraged to forward any found items to the OSU Police Department to maintain a central location for persons seeking lost property. The OSU Police Department highly

encourages turning in items of value such as electronics and jewelry as soon as practical, as the police lost and found is often the first call for persons missing property. Due to limitations on space, the police department lost and found does not accept items of clothing.

The OSU Police Department will maintain a database of items reported missing and cross-check them with items submitted to the department's lost and found. The police department is unable to cross check with items stored at other locations, hence the need to forward lost and found to the police department. Identified owners will be notified immediately, and arrangements will be made to return the property. Any unidentifiable or unclaimed property will be held for six months prior to being disposed of according to Oklahoma statute. Bicycles are held for nine months and then disposed of or sold at auction. Inquiries about Lost and Found property can be made by calling OSU Police Department Records at 405-744-2844 or 405-744-2845.

TRANSPORTATION

SAFETY TIPS FOR VEHICLE OPERATORS:

- Always stop for pedestrians in crosswalks.
- Watch your "blind spot" for other traffic, such as bicycles and pedestrians, overtaking you when making right turns.
- Always behave in a predictable manner and use turn signals. Other traffic may not always see you or recognize your intentions.
- Oversized vehicles must watch for bicycles, pedestrians, and other traffic when turning.
- Always be mindful of the speed limit. The posted speed limits on campus are much slower than regular city streets due to the close quarters of campus and the high volume of pedestrians.
- The State of Oklahoma has a "Distracted Driving" law. This law prohibits a driver from using anything that would distract them from devoting their full time and attention to the operation of the automobile.
- The State of Oklahoma has also adopted a law prohibiting the use of a hand-held communication device to compose, send or read electronic messages while the vehicle is in motion.

PEDESTRIAN RIGHT OF WAY

Walking is a primary mode of transportation around Oklahoma State University, so it is important for pedestrians to remember that they are also subject to traffic control signals. While vehicles must yield to pedestrians in a clearly marked crosswalk or intersection, pedestrians must yield to vehicles when crossing anywhere else. Even though vehicles are required to yield, always remember to make eye contact with the driver before proceeding into the path of an oncoming vehicle. Pedestrians are also required by law to obey Pedestrian Control Signals (PCS) when crossing at an intersection where those are in use. Only cross at an intersection when the PCS signifies for them to cross. A green light for motor vehicles does not allow a pedestrian to cross if the PCS is present. Failing to use a marked crosswalk to

cross a road between two intersections with traffic lights constitutes the illegal act of jay-walking in Oklahoma, and violators are subject to citation.

SEATBELT SAFETY

The state law in Oklahoma requires both the driver and the front seat passenger to have properly fastened safety belts when the vehicle is in motion. Because OSU is a public university owned by the State of Oklahoma, all traffic ways are considered public, thus requiring seat belts at all times a vehicle is in motion, whether in a parking lot or on a street. All passengers under the age of 13 are required to wear seatbelts or be placed in a child passenger restraint system, and the safest place for them is the back seat.

BIKES ON CAMPUS

In Oklahoma, a bicycle is considered a vehicle when operated on the roadway. As a result, bicycles are subject to the same responsibilities and regulations as autos. The same fines apply to motorists and bicyclists for traffic violations, such as failing to yield to pedestrians, running a stop sign or red light, going the wrong way on a one-way street, or riding on the wrong side of the road. Additionally, there are laws specific to bicycle operators, such as a mandatory white front light and red rear light if the bicycle is being ridden between sunset and sunrise and an allowance for only one person per permanently affixed seat. When operated on sidewalks, bicycles should be aware of, and yield to, pedestrian traffic. If a bicyclist chooses to use a pedestrian crosswalk, they must dismount and walk their bicycle across the street.

ELECTRIC SCOOTERS, KICK SCOOTERS, SEGWAYS, HOVERBOARDS, ROLLER SKATES, ROLLER BLADES AND SKATEBOARDS

As the use of electric scooters, kick scooters, Segways, hoverboards, roller skates, roller blades, skateboards and other motorized vehicles not legally permitted on public streets rises, guidelines should be followed. Electric scooters, kick scooters, Segways, hoverboards, roller skates, roller blades, skateboards and other motorized vehicles not legally permitted on public streets **ARE PERMITTED** on campus **EXCEPT** in the following locations (with the exception of university-issued Segways):

- On or in any university buildings, structures, stairways, sub-walks, elevated sidewalks, access ramps, steps, retaining walls, handrails or other architectural elements.
- On or in any planting area, grass area or seeded area.
- On streets open for vehicular traffic.
- Where prohibited by sign, OSU Parking or police officer.
- In the immediate area of the Edmon Low Library, including the library mall and fountain areas.
- All parking garages.

Whenever any person is riding on these modes, that individual must yield the right-of-way to any pedestrian, bicyclist or other mobility assistance devices for the disabled, and operate in a courteous manner and with due regard for the safety of others. The campus grounds, sidewalks, streets, parking lots and other areas are not designed for or intended to be used by persons riding roller skates, roller blades or skateboards. Therefore, persons using these devices must assume all risks associated with such activities. Roller skates,

roller blades and skateboards are to be used on campus as a mode of transportation only. No tricks or extracurricular activities are to be done while using these items.

HOMELAND SECURITY

NATIONAL TERRORISM ADVISORY SYSTEM

The National Terrorism Advisory System, or NTAS, replaced the color-coded Homeland Security Advisory System. This new system will more effectively communicate information about terrorist threats by providing timely, detailed information to the public, government agencies, first responders, airports and other transportation hubs, and the private sector.

NTAS Alerts

After reviewing the available information, the secretary of Homeland Security will decide, in coordination with other federal entities, whether an NTAS Alert should be issued. NTAS Alerts will only be issued when credible information is available.

These alerts will include a clear statement that there is an **IMMINENT THREAT** or **ELEVATED THREAT**. Using available information, the alerts will provide a concise summary of the potential threat, information about actions being taken to ensure public safety, and recommended steps that individuals, communities, businesses and governments can take to help prevent, mitigate or respond to the threat.

The NTAS Alerts will be based on the nature of the threat. In some cases, alerts will be sent directly to law enforcement or affected areas of the private sector, while in others, alerts will be issued more broadly to the public through both official and media channels.

The NTAS Alerts recognize that Americans all share responsibility for the nation's security and should always be aware of the heightened risk of terrorist attack in the United States and what they should do. Oklahoma State University will strive to maintain a regular class schedule; however, the campus may find itself under a state of high alert necessitating increased security to help ensure the safety of all campus residents, employees and visitors.

When a state of high alert exists, OSU will strictly follow Homeland Security guidelines in implementing greater protective measures for all of those concerned. There will be an increased presence of police officers and security in and around all campus facilities, residence halls and classrooms. As conditions warrant, OSU's Emergency Operations Center will be activated, and key staff will assemble to make appropriate decisions for further increases in security measures.

It is a simple fact of life that people lose things. While frustrating at the best of times, the loss can be costly if the item lost was a set of keys or swipe card for a secure environment. This loss could be significant if the security breach leads to theft, vandalism or sabotage; but, it can be dire if it leads to a terrorist obtaining access to a secure area of a water treatment plant, a power distribution center or a biological or chemical laboratory. Any loss of keys or swipe cards should be reported to OSU Police immediately.

Everyone is encouraged to be especially vigilant about unexplained or suspicious packages in their areas. At special events or large gatherings, purses, packages and briefcases will be subject to search. Everyone should be prepared for emergencies and interruptions and review emergency and evacuation plans for their areas.

Please keep in mind that one of the objectives of terrorism is to frighten and disrupt activities of the university. To the extent possible, we want to continue normal activities of the University, but with a greater level of caution.

Additional information about homeland defense measures and homeland defense website links are located on the Campus Safety website at safety.okstate.edu.

Prevention

ALCOHOL AND DRUG AWARENESS

Oklahoma State University seeks to encourage and sustain an academic environment that respects individual freedoms and promotes the health, safety and welfare of its students, faculty, staff and visitors. These participants are expected to know and follow the applicable laws and all university rules and regulations. Each person is responsible for his/her own behavior.

Oklahoma State University complies with the Drug-Free Schools and Communities Act Amendments of 1989. This act requires that Oklahoma State University certify it has adopted and implemented a program to prevent the unlawful possession, use or distribution of illicit drugs and alcohol by students and employees in order to remain eligible for federal financial assistance. As set forth in local, state and federal laws, and the rules and regulations of the university, Oklahoma State University prohibits the unlawful possession,

use or distribution of illicit drugs and alcohol by students and employees in buildings, facilities, grounds or other property owned and/or controlled by the university or as part of university activities. With limited exceptions, beer and alcohol are not allowed on campus. Since July 1, 2000, students who are convicted of an offense involving the sale or possession of a controlled substance may become ineligible for federal student aid. For the university's complete drug and alcohol policy, request the Oklahoma State University Student Code of Conduct or the Drug-Free Workplace Policy (Policy 1-1205).

Any student or employee of Oklahoma State University who has violated this prohibition shall be subject to disciplinary action including, but not limited to, suspension, expulsion, termination of employment, referral for prosecution and/or completion, at the individual's expense, of an appropriate rehabilitation program. Any disciplinary action shall be taken in accordance with applicable policies of the university.

Drug and alcohol abuse programs are conducted each semester by OSU Alcohol and Substance Abuse Center, Housing and Residential Life, Department of Wellness and the OSU Police Department.

Other resources

OSU ALCOHOL AND SUBSTANCE ABUSE CENTER: 405-744-2818

REACH-OUT HOTLINE: 1-800-522-9054

CRIME PREVENTION

Crime prevention is defined as the anticipation, recognition, and appraisal of a crime risk, and the initiation of some action to remove or reduce that risk. Many campuses around the country investigate and make public the nature and

quantity of crimes, as well as how crimes are investigated. Oklahoma State University subscribes to that approach and further believes that the public should know how active the OSU Police are in crime prevention and detection. OSU has experienced success at reducing and preventing crime. Some of the notable efforts are:

- Emergency 911 dialing
- Orange Shield Safety app
- "Blue Phone" Emergency telephone system throughout campus
- 24-hour preventive patrols
- Campus patrolled by uniformed officers on foot, bicycles, Segways, and vehicles
- Burglar alarms in key areas
- 24-hour staff in residence halls
- Custodial staff occupies academic buildings after hours and provides information to the OSU Police about suspicious activity or persons in or around the buildings
- Crime prevention seminars and presentations conducted each semester with staff and student groups
- Sexual assault prevention conducted on a continual basis
- Rape Aggression Defense (RAD) presentations on at least a semi-annual basis
- Safe Walk escort service on campus and from campus to the Greek Neighborhood
- Crime Stopper telephone line — 405-744-TIPS (405-744-8477)
- Some parking lots and campus areas monitored by surveillance cameras

- Lighting surveys
- All new students required to complete online sexual violence prevention training.
- Faculty and staff are required to complete Title IX training in person or online.

A common theme of all awareness and crime prevention programs is to encourage students and employees to be aware of their responsibility for their own security and the security of others.

In addition to seminars, information is disseminated to students and employees through crime prevention awareness packets, security alert posters, displays, videos, and articles and advertisements in university and student newspapers.

In addition to preventing crime, considerable effort is devoted to crime intervention. All reported crimes are investigated immediately. Follow-up investigations occur to identify the offenders. Where multiple incidents occur, surveillance techniques may be implemented to help apprehend violators. When caught, offenders are dealt with through the Payne County court system and OSU Student Conduct Education and Administration, when appropriate. The OSU Police Department encourages the accurate and prompt reporting of criminal incidents, no matter how insignificant or small. Victims are encouraged to assist in police investigation and subsequent filing of charges. Through these measures, OSU will become a safer community.

To schedule a crime prevention visit or presentation, call 405-744-6523.

ORANGE SHIELD

Orange Shield is a mobile device application that is available in the Apple App Store and Google Play. Orange Shield can immediately connect to the police no matter where you are, and has a format to make a report, a peer-to-peer text alert system, a way to request a Safe Walk escort on campus, a resource guide and a profile that includes pertinent medical information in case of a medical emergency.

SAFETY TIPS

PROPERTY PROTECTION:

1. Lock your door whenever you leave your room for any length of time or when sleeping.
2. Secure your vehicle. Close all windows and lock all doors.
3. Never prop open any door.
4. Adequately protect all valuables in your room, such as wallets, jewelry, credit cards, cash, and computers. Do not leave valuables or cash in plain view.
5. Protect your books and put your name in them. Do not leave them in public places.
6. Do not loan your keys to anyone.
7. Never hide your keys outside your apartment or room. Do not put your name or address on your key rings.
8. Take all valuable items home with you during vacations.
9. When in a public place, keep valuable possessions out of sight. If you must leave an area for any length of time, take personal items with you.

PERSONAL SAFETY:

At home, in an apartment building, or in a residence hall:

1. Keep your room door locked when you are napping or sleeping.
2. Never let unauthorized persons come into your room, enter residence halls, or enter apartment security doors. Always ask to see proper identification.
3. Never prop open inside or outside doors.
4. Do not hide keys outside of your room or apartment. Do not put your name or address on your key rings.
5. Avoid working or studying alone in a campus building.
6. Never dress in front of a window. Close blinds or curtains after dark.
7. If you are awakened by an intruder inside your room, do not attempt to apprehend the intruder. Try to get an accurate description of the intruder and then call the police.
8. Any suspicious activity should be reported to the OSU Police immediately.

When driving:

1. Have your car keys in hand when approaching your vehicle so you can enter quickly.
2. Always check underneath your car upon approach and in the rear seat for intruders before entering your automobile.
3. Lock your doors and keep windows rolled up whenever possible.
4. Drive on well-traveled and well-lit streets.

5. Never hitchhike, and never pick up hitchhikers.
6. If someone tries to enter your stopped vehicle, sound the horn and drive to a safe area such as a convenience store.
7. If your vehicle breaks down, ask any person who stops to help to call the police. Do not allow any person access to you or inside your car. Roll down your window no more than an inch. Be aware that an accident may be staged to provide the other driver an opportunity to commit a criminal act.
8. Leave enough room between your car and the one ahead so you can drive around it if necessary.
9. Call ahead when driving to your home or apartment late at night and have someone watch you walk from your car to the residence.
10. Limit distractions such as cell phones, and do not text and drive.

While walking or jogging:

1. Avoid walking or jogging alone, and try not to walk or jog after dark.
2. Avoid dark or vacant areas. Walk along well-lit routes.
3. Be alert to your surroundings. If you suspect you are being followed: Run in a different direction, go to the other side of the street and yell for help, or move quickly to a lighted area, a group of people, or a blue light emergency phone.
4. Have your keys ready when returning to your residence hall or apartment. Keep your personal or valuable items concealed and close to your body.

5. Avoid wearing headphones when walking or jogging. Always be aware of your surroundings and practice risk avoidance techniques.
6. Limit distractions such as cell phones and avoid texting.

SUICIDE PREVENTION

Oklahoma State University has dedicated programs and services that strive to protect emotional health and prevent suicide for our community members. These programs include strengthening mental health, providing support for substance abuse, and creating suicide prevention programs and systems. They also equip university community members with the skills and knowledge to help themselves and each other in the face of a mental health crisis. We encourage community awareness, understanding and action for young adult mental health.

Below are programs and services that aid in prevention and response to suicidal ideation of community members:

- JED Campus — In 2019, the university launched an initiative targeted toward suicide prevention and awareness. The JED Foundation identified Oklahoma State as a designated JED Campus with an overall goal of identifying best practice methods for preventing and bringing awareness to the topic of suicide within the university community. The JED Campus program is a four-year commitment by the university.
- Student Assistance by Mercy (Call SAM): The university partners with Mercy Health System to provide a 24-hour hotline number where students can speak directly and immediately with a licensed counselor. The service

provides crisis response to students in distress in coordination with university police and residential life.

- Grand Lake Mental Health Center: The university partners with community mental health provider Grand Lake to provide assistance to campus members in the face of a mental health crisis. Crisis services are available 24-7 by utilizing a crisis response line. Grand Lake has also equipped university police with iPad technology in responding to mental health concerns. OSU community members in distress can communicate with a licensed counselor through the technology and receive immediate evaluation and treatment.

Grand Lake Mental Health Center
604 S. Walnut St., Stillwater
405-372-2202 (Office)
1-800-722-3611 (24-hour crisis line)

Below are programs specifically geared targeted toward community awareness and education of suicidal ideation and improved mental health. These programs are available throughout the academic year and sponsored by University Counseling Services, the Department of Wellness and health services.

- Therapy Assistance Online (TAO): University Counseling Services launched the online interactive program TAO in the spring of 2019. The program provides a self-guided approach to preventive topics related to mental health. All Oklahoma State students, faculty and staff are eligible to use the program.
- QPR Training: The QPR program (Question, Persuade, Refer) is a national institute whose mission is to reduce suicidal behaviors and save lives by providing innovative, practical and proven suicide prevention training.

The program works to identify signs of crisis and seeks to empower all people, regardless of their background, to make a positive difference in the life of someone they know. The university has many certified instructors who lead QPR workshops throughout the year.

- **Mental Health First Aid:** Mental Health First Aid is a national program dedicated to teaching skills in response to the signs of mental illness and substance use. The Department of Wellness has invested resources into making this available across the campus community through sponsoring instructors and facilitating workshops. The Mental Health First Aid course is an eight-hour course that teaches how to identify, understand and respond to signs of mental illnesses and substance use disorders. The training provides participants with helpful tools and support for interacting with someone who may be developing a mental health or substance use problem or experiencing a crisis.

Sexual Violence

Oklahoma State University takes acts of sexual harassment, which include sexual violence, extremely seriously and believes that one victim is too many. The following information, consistent with U.S. Department of Education Title IX guidance, provides details on the university response, resources and remedies to sexual violence. The university hopes that you will help us in our efforts to maintain a safe and productive environment for all members of our community to live, learn and be successful by uniting as a



community committed to ending sexual violence and sexual harassment.

Sexual harassment and sexual violence are forms of gender discrimination not tolerated at OSU. Oklahoma State University strongly encourages victims to report all acts of gender discrimination. Additionally, students have the option of filing a formal complaint with Student Conduct Education and Administration as well as with the police. Please be aware that even if an individual chooses not to file a formal complaint, the university may take interim measures, such as changing academic schedules and housing arrangements. These measures may be taken to provide safety for the victim in the educational setting.

Oklahoma State University does not discriminate on the basis of race, color, national origin, sex, qualified disability, religion, sexual orientation, gender identity, veterans' status, genetic information or age in its programs and activities. Therefore, the university will address all complaints of sexual

harassment, including sexual violence, the same, regardless of whether the complainant (person filing the complaint) or respondent (person the complaint is filed against) is of a protected class or sex.

Where it is determined that sexual misconduct is more likely than not to have occurred, university sanctions can include suspension or expulsion. Even if law enforcement and criminal justice authorities choose not to prosecute a particular incident, the university may still pursue the incident through the student conduct process. All student conduct processes are separate from law enforcement investigations. In instances where gender discrimination is not addressed through the student conduct system, the university still has the obligation under Title IX to take immediate action to eliminate the harassment, prevent its recurrence and address its effects, irrespective of formal legal processes.

More information and resources can be found at 1is2many.okstate.edu.

DEFINITIONS

The following are definitions used by Oklahoma State University and include examples to assist in explaining the behavior.

SEXUAL HARASSMENT

Sexual harassment is unwelcome sexual advances, requests for sexual favors and other verbal or physical contact or communication of a sexual nature when:

- A. Submission to such conduct or communication is made either explicitly or implicitly as a term or condition of educational benefits, employment, academic evaluations or other academic opportunities.
- B. Submission to or rejection of such conduct or communication by an individual is used as the basis for an employment decision or academic decision affecting such individual.
- C. Such conduct is sufficiently severe, pervasive or persistent and objectively offensive that it has the effect of creating an intimidating, hostile or offensive environment that negatively affects an individual's academic or employment environment.

Sexual harassment does not include verbal expressions or written materials that are relevant and appropriately related to course subject matter or curriculum, and this policy shall not abridge academic freedom or the university's educational mission.

Sexual harassment can create a hostile environment. Sexual harassment should be reported even if it doesn't reach the point of creating a hostile environment. A hostile environment is defined as subjectively and objectively offensive and

sufficiently severe or pervasive to alter the conditions of the victim's educational, employment or university environment.

Sexual harassment could occur off-campus and still have an effect on an individual's educational, employment or university environment as well as create a hostile environment. A one-time non-consensual contact could also create a hostile environment.

Examples of behavior that could be sexual harassment:

- Unwelcomed sexual flirtation, advances or propositions of sexual activities.
- Asking about someone else's personal, social or sexual life or about their sexual fantasies, preferences or history.
- Discussing your own personal sexual fantasies, preferences or history.
- Repeatedly asking for a date from a person who is not interested.
- Whistles, catcalls or insulting sounds.
- Sexually suggestive jokes, innuendoes or turning discussions into sexual topics.
- Sexually offensive or degrading language used to describe an individual or remarks of a sexual nature to describe a person's body or clothing.
- Calling a person a "hunk," "doll," "babe," "sugar," "honey," or similar descriptive terms.
- Displaying sexually demeaning or offensive objects and pictures.
- Making sexual gestures with hands or body movements.
- Rating a person's sexuality.

- Unwelcomed touching of a person's body including massaging a person.

SEXUAL VIOLENCE

Sexual violence is physical sexual acts perpetrated against a person's will or when a person is incapable of giving consent. A number of different acts fall into the category of sexual violence, including sexual misconduct, stalking, dating violence and domestic violence.

SEXUAL MISCONDUCT

Sexual misconduct is a broad term encompassing any non-consensual contact of a sexual nature. Sexual misconduct may vary in severity and consists of a range of behavior or attempted behavior including, but not limited to, the following examples of prohibited conduct:

A. Unwelcome sexual touching

The touching of an unwilling or non-consensual person's intimate parts (such as genitalia, groin, breast, buttocks, mouth or clothing covering same); touching an unwilling person with one's own intimate parts; or forcing an unwilling person to touch another's intimate parts.

B. Exposure

Engaging in indecent exposure, sexual acts in a public place, voyeurism or non-consensual sharing of sexually explicit images.

C. Non-consensual sexual assault

Penetrating any bodily opening of an unwilling or non-consensual person with any object or body part.

D. Forced sexual assault

Penetrating any bodily opening of an unwilling or non-consensual person with any object or body part that is committed either by force, threat or intimidation or through exploitation of another's mental or physical condition (such as lack of consciousness, incapacitation due to ingestion of drugs or alcohol, age or mental disability) of which the respondent was aware or should have been aware.

EFFECTIVE CONSENT is informed, freely and actively given, using mutually understandable words or actions that indicate a willingness to participate in mutually agreed upon sexual activity. Initiators of sexual activity are responsible for obtaining effective consent. Silence or passivity is not effective consent. The use of intimidation, coercion, threats, force or violence negates any consent obtained. Consent is not effective if obtained from an individual who is incapable of giving consent due to lack of consciousness, age, mental disability or incapacitation due to ingestion of drugs or alcohol.

This definition of consent is the exclusive definition used in the Student Code of Conduct. It is also used for Title IX purposes throughout the university.

Individuals who commit acts of sexual misconduct assume responsibility for their behavior and must understand that the use of alcohol or other drugs does not reduce accountability for their actions.

Examples of sexual misconduct violations include, but are not limited to:

- Ignoring an individual's protest and engaging in sexual activity.

- Convincing somebody to have sex likely constitutes intimidation or coercion. If someone is coerced, the consent is not effective consent.
- Alcohol and/or drug use may render an individual incapable of giving consent for sexual activity. For example, someone who is incapacitated may agree to have sex at the time but have no memory of the consent. This person may have been functioning in a "blackout" and could not give effective consent.
- Holding a person down or preventing a person from leaving the room and forcing him or her to engage in sexual activity against the person's will.

STALKING

Stalking refers to one who engages in a course of conduct directed at a specific person that would cause a reasonable person to fear for the person's safety or the safety of others or suffer substantial emotional distress.

- A. Stalking is defined to mean two or more acts, including, but not limited to, acts in which the stalker directly, indirectly or through third parties follows, monitors, observes, surveils, threatens or communicates to or about a person by any action, method, device or means, or interferes with a person's property.
- B. Reasonable person means a reasonable person under similar circumstances and with similar identities to the victim.
- C. Substantial emotional distress would include significant mental suffering or anguish that may but does not necessarily require medical or other professional treatment or counseling.

Actions that a stalker takes to contact, harass, track or frighten another could include repeatedly:

- following
- unsolicited visits or communication
- using online social media inappropriately
- damaging property
- showing up at places an intended victim frequents
- sending unsolicited mail, e-mail, texts and pictures
- creating a website about a target of stalking
- sending unsolicited gifts
- stealing things that belong to intended victim
- calling repeatedly

Stalking can occur by someone that is known casually, a current boyfriend or girlfriend, someone dated in the past or a stranger.

DATING VIOLENCE

Dating violence is committed by a person who is or has been in a social relationship of a romantic or intimate nature with the victim. The existence of such a relationship shall be determined based on a consideration of the following factors:

- Length of the relationship
- Type of relationship
- Frequency of interaction between the persons involved in the relationship.

Dating violence includes, but is not limited to, sexual or physical abuse or the threat of such abuse. Dating violence does not include acts that meet the definition of domestic violence.

DOMESTIC VIOLENCE

Domestic violence is a crime of violence committed by a:

- current or former spouse or intimate partner of the victim
- person with whom the victim shares a child in common
- person who is cohabitating with or has cohabitated with the victim as a spouse or person similarly situated to a spouse of the victim

Domestic violence is a pattern of abusive behavior in any relationship that is used by one partner to gain or maintain power and control over another intimate partner. Domestic violence can be physical, sexual, emotional, economic or psychological actions or threat of actions that influence another person.

The definition is consistent with Violence Against Women Act.

RETALIATION

OSU will not tolerate retaliation against a person who, in good faith, brings a complaint forward. Retaliation against an individual who has brought a complaint forward or against an individual who has participated in an investigation or conduct process is prohibited. See Board of Regents for the Oklahoma Agricultural and Mechanical Colleges Policy Manual, 3.11 Non-Retaliation, for more information.

WHAT TO DO IF YOU ARE A VICTIM OF SEXUAL VIOLENCE

- A. If you are not safe and need immediate help, call the police. If the incident happened on campus, call the OSU Police Department at 405-744-6523. If the incident occurred elsewhere in Stillwater, call the Stillwater Police Department at 405-372-4171. If the incident happened anywhere else, call the law enforcement agency that has jurisdiction in the location where it occurred.
- B. Do what you need to do to feel safe. Go to a safe place or contact someone with whom you are comfortable. You can call the **STILLWATER 24-HOUR RAPE CRISIS LINE (405-624-3020)** to get advice and discuss options for how to proceed.
- C. OSU students can also call an **OSU SEXUAL ASSAULT VICTIM ADVOCATE AT 405-564-2129** Monday – Friday 8 a.m. to 5 p.m.
- D. Do not shower, bathe, douche, change or destroy clothes, eat, drink, smoke, chew gum, take any medications or straighten the room or place of the incident. Preserving evidence is critical for criminal prosecution. Although you may not want to prosecute immediately after the incident, that choice will not be available without credible evidence. The evidence collected can also be useful in the campus conduct process.
- E. Go to the Stillwater Medical Center ER to receive care for any physical injuries that may have occurred. While in the emergency room, treatment will be provided for sexually transmitted diseases and to prevent pregnancy if desired. These services are free of charge. If you choose

not to obtain a Sexual Assault Nurse Examination but want testing or treatment for potential sexually transmitted infections, you can visit Payne County Health Department free of charge or University Health Services or Stillwater Life Services for low-cost options.

- F. Upon arrival at Stillwater Medical Center, you will be taken to a private exam area. A Sexual Assault Nurse Examiner (SANE), as well as a Sexual Assault Response Advocate (SARA) and police officer will be available for support. You will be examined by the nurse in order to treat any injuries and to gather evidence. Note: a sexual assault exam can be performed up to 120 hours (five days) after the assault.
- G. With your permission, the Sexual Assault Response Advocate will support you throughout the entire exam, which will be performed by the nurse. The advocate will provide a packet of written materials that contains information about common reactions to sexual assault, follow-up medical needs and support services.

SUPPORT SERVICES

OSU SEXUAL ASSAULT VICTIM ADVOCATES

Confidential service

OSU's Victim Advocate can confidentially provide students with information about on- and off-campus resources available to victims. OSU Victim Advocates can be reached Monday-Friday 8 a.m. to 5 p.m. at 405-564-2129. OSU Victim Advocates can also be reached by email at advocate@okstate.edu.

UNIVERSITY COUNSELING SERVICES

Confidential service

Oklahoma State University Counseling Services provides individual and group counseling services for those victimized by sexual or physical assault. Services are available to all Oklahoma State University students and their partners. Stillwater Domestic Violence Services are also available to assist victims of sexual assault. See “Other Resources” for telephone numbers.

STUDENT CONDUCT EDUCATION AND ADMINISTRATION

Cases involving students who are accused of non-academic misconduct might be assigned to Student Conduct Education and Administration. Persons found responsible for sexual misconduct could be suspended or expelled from OSU. You may obtain further information by contacting Student Conduct Education and Administration at 405-744-5470. A copy of the Student Code of Conduct can also be obtained at various locations on campus and at studentconduct.okstate.edu/code.

ACCOMMODATIONS:

- A. **ASSISTANCE IN REPORTING:** Student Conduct can assist in filing a complaint with the university conduct process and the appropriate law enforcement agencies against the student(s) who caused harm.
- **OSU COMPLAINT PROCESS:** A complaint is an official report to the university alleging that an OSU student has violated the Student Code of Conduct. You can go online to studentconduct.okstate.edu/report to

submit a complaint online or to complete a paper complaint form.

- **POLICE REPORT PROCESS:** A police report begins the moment you contact the authorities about a given situation, whether it be a crime that was committed earlier or a crime currently in progress. The OSU Police communications officer will obtain basic information from you about the incident and relay the information to patrol officers working in your area. You can have the officers meet you on scene or you can request they meet you at the police department in an effort to resolve the issue, document the facts of the incident and begin investigating the case if follow-up is required. By simply calling the OSU Police at 405-744-6523, the reporting process begins. The OSU Police Department operates 24 hour a day, seven days a week, including all holidays and university breaks.
- B. **NO CONTACT ORDER:** Student Conduct can put in place a No Contact Order between the complainant and the respondent, which would prohibit contact between both parties through any means of communication, as well as prohibit others from making contact on their behalf. Students will need to visit Student Conduct in 328 Student Union for this order to be put in place. If a No Contact Order is believed to be violated, the complainant should contact Student Conduct immediately at 405-744-5470. The university enforces No Contact Orders; the police don't. Violations of a No Contact Order will result in disciplinary action, and suspension from the university will be considered as a possible sanction.
- C. **EMERGENCY PROTECTIVE ORDER:** Student Conduct, along with Wings of Hope, can assist victims in filing for an

Emergency Protective Order. This is a court-ordered petition that prohibits contact between the complainant and respondent. Wings of Hope is located at 3800 N. Washington St. in Stillwater. Wings of Hope is the designated location in Payne County to assist in completing the petition and filing the petition with the county court clerk. Granted protective orders should be provided to the OSU Police Department, who will honor the order and assist in any intervention needed. If a protective order is believed to be violated, the complainant should contact the local police. If the incident happened on campus, call the OSU Police Department at 405-744-6523. If the incident occurred elsewhere in Stillwater, call the Stillwater Police Department at 405-372-4171. If the incident happened anywhere else, call the law enforcement agency that has jurisdiction in the location where it occurred.

- D. **SAFETY MEASURES:** Student Conduct can coordinate any reasonable arrangements that are necessary for ongoing safety. This includes transportation arrangements or providing an escort.
- E. **LIVING ARRANGEMENTS:** Student Conduct can assist in changing on-campus living arrangements to ensure safety and a comfortable living situation.
- F. **ACADEMIC ARRANGEMENTS:** Student Conduct can assist in adjusting academic schedules as well as assist in providing access to academic support services.
- G. **OTHER INTERIM MEASURES:** Student Conduct can coordinate reasonable arrangements to address the effects of sexual violence, including connecting victims with counseling, health care or academic support resources.

OSU will provide written notification to victims about options for available accommodations. Additionally, the university will maintain as confidential any protective measures or accommodations that are put in place, to the extent that maintaining such confidentiality would not impair the ability of the university to provide the accommodations or protective measures. Any necessary disclosure of information will be communicated to the complainant in compliance with the Family Educational Rights and Privacy Act (FERPA).

STUDENT CONDUCT PROCESS FOR ALLEGATIONS OF SEXUAL VIOLENCE

We want you to be knowledgeable about the process that occurs once a complaint with Student Conduct is filed. The following describes the investigation process, the hearing and the outcome of the hearing. Student Conduct will be available to explain the process as requested. The Student Conduct process will be prompt, fair and impartial. This means the process will be completed within a reasonable timeframe as designated below and without undue delay. The process will be conducted in a manner that is consistent with the university's policies and will be transparent to all parties. Lastly, the Student Conduct process will be conducted by officials who do not have conflict of interest or bias for or against the complainant or respondent.

INVESTIGATION:

- A. You will be notified of receipt of your complaint and the actions the university official will take.

- B. A university official will meet with you to discuss the complaint submitted, review the investigation and hearing process, and determine the outcome you desire from your complaint.
- C. An investigation will be conducted by a non-biased Title IX Investigator. This investigation will include:
 - meeting personally with the complainant
 - meeting personally with the student(s) accused
 - meeting personally with any witnesses
 - reviewing any documentary evidence
- D. The investigation of complaints will be adequate, reliable and impartial. The Title IX Investigator will compile an investigation report.
- E. The investigation process can take up to 60 days. If at any point either party would like an update of the investigation process, all they need to do is ask and an update will be provided.
- F. The university official will determine if a conduct hearing is possible based on the available information.
- G. If it is determined that the university will proceed with a formal conduct hearing, the complainant and the responding student(s) will be notified of the hearing date.

HEARING:

- A. Hearing notification will occur at least five days in advance and include the hearing date, time and location. Hearings will be scheduled around academic schedules of the complainant and respondent.
- B. Allegations of sexual misconduct, sexual harassment, dating violence, domestic violence and stalking will be heard by the Conduct Committee Hearing Panel, which

is comprised of a faculty member, a staff member and a student who receive annual training. Training includes, but is not limited to, the following topics:

- definitions and issues related to dating violence, domestic violence, sexual assault, retaliation, and stalking
- hearing process, due process, the process that protects the safety of survivors and promotes accountability
- relevant evidence, how it should be used during a hearing, and how to weigh evidence
- proper techniques for asking questions
- preponderance of the evidence standard
- avoiding actual and perceived conflicts of interest
- trauma-informed investigations and hearing procedures
- impact of alcohol use in sexual assault
- writing facts and rationales

- C. The hearing includes opening statements, presentation of the investigation report, information about the incident, presentation of information by witnesses, and closing statements.
- D. Each party is permitted to have a person of their choosing to accompany them throughout the hearing as an adviser.
- E. All parties are permitted to be present during the hearing (except during deliberations of the panel). All parties can be in the same room in a pre-arranged, non-threatening set-up or in separate rooms with a video conference set-up.
- F. All parties are permitted to make statements and present witnesses and information during the hearing. Witnesses and information need to be directly related to the incident.

- A. Possible outcomes include Conduct Expulsion, Conduct Suspension, Conduct Probation, Residence Hall Status Change, No Contact Order, Class Removal, Educational and Behavioral Change Requirement, and Restrictions. Detailed definitions of these sanctions are listed in the *Student Code of Conduct*. When it is determined that sexual misconduct is more likely than not to have occurred, the outcome can include separation from the university.
- B. Parties have the right to be informed of the outcome. Both parties will be notified within two business days after the hearing at the same time. If the victim is deceased as a result of such a crime or offense, the next of kin of the victim shall be treated as the victim for purposes of disclosure.
- C. Both parties have the right to appeal the decision reached through the hearing proceedings within seven business days after the hearing.

Sexual harassment and sexual violence can be emotionally disruptive, and it takes time to come to terms with such major stress. In addition to support that may be found in family and friends, the following agencies and departments can serve as resources.

available for victims both within the university and in the community.

It is important to be aware that different individuals who one may contact for assistance following an incident may have different responsibilities regarding confidentiality, depending on their position. Under state law, some individuals can assure the victim of confidentiality, including counselors, medical professionals and certified victims' advocates. In general, however, any other university employee cannot guarantee complete confidentiality, unless specifically provided by law. Universities must balance the needs of the individual victim with an obligation to protect the safety and well-being of the community at large.

OSU will protect the identity of victims and other necessary parties. The university is required to complete publicly available record keeping data on crimes that occur on campus. In these reports, personally identifying information about the victim is excluded.

Confidential service

OSU's Victim Advocate can confidentially provide students with information about on- and off-campus resources available to victims.

405-564-2129 (Monday through Friday, 8 a.m. to 5 p.m.)

Email: advocate@okstate.edu

22

COUNSELING RESOURCES

Confidential service

OSU STUDENT COUNSELING CENTER

320 Student Union
405-744-5472

A counselor is available 24 hours a day at call SAM
(1-855-225-2726).

WINGS OF HOPE

3800 N. Washington Ave.
405-372-9922

24-hour Crisis Line: 405-624-3020
wingsofhopeok.com

PSYCHOLOGICAL SERVICES CENTER

118 North Murray Hall
405-744-5975

psychology.okstate.edu/osupsc

OTHER LOCAL SERVICES AVAILABLE TO VICTIMS

Non-confidential services

OSU POLICE DEPARTMENT

104 USDA Building, OSU Campus
405-744-6523
police.okstate.edu

STILLWATER POLICE DEPARTMENT

723 S. Lewis St.
405-372-4171

stillwaterpolicedept.org

OSU STUDENT CONDUCT EDUCATION AND ADMINISTRATION

328 Student Union
405-744-5470

Email: student.conduct@okstate.edu
studentconduct.okstate.edu

TITLE IX COORDINATOR

408 Whitehurst Hall
405-744-9154

Email: eeo@okstate.edu
eeo.okstate.edu

MEDICAL SERVICES

It is important to have a thorough medical examination after a sexual assault even if the victim does not have any apparent physical injuries. Medical providers can treat injuries and test for sexually transmitted infections.

UNIVERSITY HEALTH SERVICES (on-campus)

1202 W. Farm Road
405-744-7665

uhs.okstate.edu

STILLWATER MEDICAL CENTER (off-campus)

1323 W. Sixth Ave.
405-372-1480

stillwater-medical.org

Additional information on resources as well as educational information on sexual violence prevention can be found at
1is2many.okstate.edu.

Also, reference changingourcampus.org for more information and resources.

VICTIM BILL OF RIGHTS

- Survivors shall be notified of their options to notify law enforcement and campus authorities, which includes the option not to notify such authorities.

- Accuser and accused must have the same opportunity to have others present.
- Both parties shall be informed of the outcome of any disciplinary proceeding.
- Survivors shall be notified of counseling services.
- Survivors shall be notified of options for changing academic and living situations.

When a student or employee reports that they have been a victim of dating violence, domestic violence, sexual assault or stalking, whether on- or off-campus, the university will provide a written explanation of the student's or employee's rights and options.

DEFINITIONS UNDER OKLAHOMA LAW

CONSENT: The term "consent" means the affirmative, unambiguous and voluntary agreement to engage in a specific sexual activity during a sexual encounter which can be revoked at any time. Consent cannot be:

- Given by an individual who:
 - is asleep or is mentally or physically incapacitated either through the effect of drugs or alcohol or for any other reason, or
 - is under duress, threat, coercion or force; or
- Inferred under circumstances in which consent is not clear including, but not limited to:
 - the absence of an individual saying "no" or "stop", or
 - the existence of a prior or current relationship or sexual activity.

21 Okla. Stat. § 1113 (effective June 6, 2016).

DATING VIOLENCE is not defined by the state of Oklahoma; however, violence against a person with whom the perpetrator is in a dating relationship is considered domestic violence, defined below. A *dating relationship* is defined as: an intimate association, primarily characterized by affectionate or sexual involvement. For purposes of this act, a casual acquaintance or ordinary fraternization between persons in a business or social context shall not constitute a dating relationship.

22 Okla. Stat. § 60.1.

DOMESTIC VIOLENCE is not defined in Oklahoma law. However, the criminal definition of *domestic abuse* is defined as: Any act of physical harm, or the threat of imminent physical harm which is committed by an adult, emancipated minor, or minor child thirteen (13) years of age or older against another adult, emancipated minor or minor child who is currently or was previously an intimate partner or family or household member. “Family or household members” means: (a) parents, including grandparents, stepparents, adoptive parents and foster parents, (b) children, including grandchildren, stepchildren, adopted children and foster children, and (c) persons otherwise related by blood or marriage living in the same household. “Intimate partner” means: (a) current or former spouses, (b) persons who are or were in a dating relationship, (c) persons who are the biological parents of the same child, regardless of their marital status or whether they have lived together at any time, and (d) persons who currently or formerly lived together in an intimate way, primarily characterized by affectionate or sexual involvement. A sexual relationship may be an indicator that a person is an intimate partner, but is never a necessary condition.

21 Okla. Stat. § 644.

SEXUAL ASSAULT

- A. rape, or rape by instrumentation, as defined in Sections 1111, 1111.1 and 1114 of [Title 21], or
- B. forcible sodomy, as defined in Section 888 of [Title 21].

21 Okla. Stat. § 142.20.

RAPE (AS USED IN THE DEFINITION FOR “SEXUAL ASSAULT”)

- A. Rape is an act of sexual intercourse involving vaginal or anal penetration accomplished with a male or female who is not the spouse of the perpetrator and who may be of the same or the opposite sex as the perpetrator under any of the following circumstances:
 - 1. Where the victim is under sixteen (16) years of age;
 - 2. Where the victim is incapable through mental illness or any other unsoundness of mind, whether temporary or permanent, of giving legal consent;
 - 3. Where force or violence is used or threatened, accompanied by apparent power of execution to the victim or to another person;
 - 4. Where the victim is intoxicated by a narcotic or anesthetic agent, administered by or with the privity of the accused as a means of forcing the victim to submit;
 - 5. Where the victim is at the time unconscious of the nature of the act and this fact is known to the accused;
 - 6. Where the victim submits to sexual intercourse under the belief that the person committing the act is a spouse, and this belief is induced by artifice, pretense, or concealment practiced by the accused or by the accused in collusion with the spouse with intent to

induce that belief. In all cases of collusion between the accused and the spouse to accomplish such act, both the spouse and the accused, upon conviction, shall be deemed guilty of rape;

- 7. Where the victim is under the legal custody or supervision of a state agency, a federal agency, a county, a municipality or a political subdivision and engages in sexual intercourse with a state, federal, county, municipal or political subdivision employee or an employee of a contractor of the state, the federal government, a county, a municipality or a political subdivision that exercises authority over the victim; or the subcontractor or employee of a subcontractor of the state or federal government, a county, a municipality or a political subdivision that exercises authority over the victim;
- 8. Where the victim is at least sixteen (16) years of age and is less than twenty (20) years of age and is a student, or under the legal custody or supervision of any public or private elementary or secondary school, junior high or high school, or public vocational school, and engages in sexual intercourse with a person who is eighteen (18) years of age or older and is an employee of the same school system; or
- 9. Where the victim is nineteen (19) years of age or younger and is in the legal custody of a state agency, federal agency or tribal court and engages in sexual intercourse with a foster parent or foster parent applicant.
- B. Rape is an act of sexual intercourse accomplished with a male or female who is the spouse of the perpetrator if force or violence is used or threatened, accompanied by apparent power of execution to the victim or to another person.

21 Okla. Stat. § 1111

RAPE BY INSTRUMENTATION (AS USED IN THE DEFINITION FOR "SEXUAL ASSAULT")

Rape by instrumentation is an act within or without the bonds of matrimony in which any inanimate object or any part of the human body, not amounting to sexual intercourse is used in the carnal knowledge of another person without his or her consent and penetration of the anus or vagina occurs to that person. Provided, further, that at least one of the circumstances specified in Section 1111 of this title has been met; further, where the victim is at least sixteen (16) years of age and is less than twenty (20) years of age and is a student, or under the legal custody or supervision of any public or private elementary or secondary school, junior high or high school, or public vocational school, and engages in conduct prohibited by this section of law with a person who is eighteen (18) years of age or older and is an employee of the same school system, or where the victim is under the legal custody or supervision of a state or federal agency, county, municipal or a political subdivision and engages in conduct prohibited by this section of law with a federal, state, county, municipal or political subdivision employee or an employee of a contractor of the state, the federal government, a county, a municipality or a political subdivision that exercises authority over the victim, consent shall not be an element of the crime. Provided, further, that at least one of the circumstances described in Section 1111 of this title has been met; further, where the victim is nineteen (19) years of age or younger and in the legal custody of a state agency, federal agency or tribal court and engages in conduct prohibited by this section of law with a foster parent or foster parent applicant. Except for persons sentenced to life or life without parole, any

person sentenced to imprisonment for two (2) years or more for a violation of this section shall be required to serve a term of post-imprisonment supervision pursuant to subparagraph f of paragraph 1 of subsection A of Section 991a of Title 22 of the Oklahoma Statutes under conditions determined by the Department of Corrections. The jury shall be advised that the mandatory post-imprisonment supervision shall be in addition to the actual imprisonment.

21 Okla. Stat. § 1111.1.

FORCIBLE SODOMY (AS USED IN THE DEFINITION FOR "SEXUAL ASSAULT")

A. Any person who forces another person to engage in the detestable and abominable crime against nature, pursuant to Section 886 of this title, upon conviction, is guilty of a felony punishable by imprisonment in the custody of the Department of Corrections for a period of not more than twenty (20) years. Except for persons sentenced to life or life without parole, any person sentenced to imprisonment for two (2) years or more for a violation of this subsection shall be required to serve a term of post-imprisonment supervision pursuant to subparagraph f of paragraph 1 of subsection A of Section 991a of Title 22 of the Oklahoma Statutes under conditions determined by the Department of Corrections. The jury shall be advised that the mandatory post-imprisonment supervision shall be in addition to the actual imprisonment. Any person convicted of a second violation of this section, where the victim of the second offense is a person under sixteen (16) years of age, shall not be eligible for probation, suspended or deferred sentence. Any person convicted of a third or subsequent violation of this section, where the victim of the third or subsequent offense is a person under sixteen (16) years

of age, shall be punished by imprisonment in the custody of the Department of Corrections for a term of life or life without parole, in the discretion of the jury, or in case the jury fails or refuses to fix punishment then the same shall be pronounced by the court. Any person convicted of a violation of this subsection after having been twice convicted of a violation of subsection A of Section 1114 of this title, a violation of Section 1123 of this title or sexual abuse of a child pursuant to Section 843.5 of this title, or of any attempt to commit any of these offenses or any combination of the offenses, shall be punished by imprisonment in the custody of the Department of Corrections for a term of life or life without parole.

B. The crime of forcible sodomy shall include:

1. Sodomy committed by a person over eighteen (18) years of age upon a person under sixteen (16) years of age;
2. Sodomy committed upon a person incapable through mental illness or any unsoundness of mind of giving legal consent regardless of the age of the person committing the crime;
3. Sodomy accomplished with any person by means of force, violence, or threats of force or violence accompanied by apparent power of execution regardless of the age of the victim or the person committing the crime;
4. Sodomy committed by a state, county, municipal or political subdivision employee or a contractor or an employee of a contractor of the state, a county, a municipality or political subdivision of this state upon a person who is under the legal custody, supervision or authority of a state agency, a county, a municipality or a political subdivision of this state; or the subcontractor or employee of a subcontractor of the

contractor of the state or federal government, a county, a municipality or a political subdivision of this state;

5. Sodomy committed upon a person who is at least sixteen (16) years of age but less than twenty (20) years of age and is a student of any public or private secondary school, junior high or high school, or public vocational school, with a person who is eighteen (18) years of age or older and is employed by the same school system;
6. Sodomy committed upon a person who is at the time unconscious of the nature of the act, and this fact should be known to the accused; or
7. Sodomy committed upon a person where the person is intoxicated by a narcotic or anesthetic agent administered by or with the privity of the accused as a means of forcing the person to submit.
8. Sodomy committed upon a person who is at least sixteen (16) years of age but less than eighteen (18) years of age by a person responsible for the child's health, safety or welfare. "person responsible for a child's health, safety or welfare" shall include, but not be limited to: (a) a parent, (b) a legal guardian, (c) a custodian, (d) a foster parent, (e) a person eighteen (18) years of age or older with whom the child's parent cohabitates, (f) any other adult residing in the hold of the child, (g) an agent or employee of a public or private residential home, institution, facility or day treatment program as defined in Section 175.2 of Title 10 of the Oklahoma Statutes, or (h) an owner, operator or employee of a child care facility, as defined by Section 402 of Title 10 of the Oklahoma Statutes.

21 *Okla. Stat. § 888 (effective June 6, 2016).*

STALKING

Any person who willfully, maliciously, and repeatedly follows or harasses another person in a manner that:

1. Would cause a reasonable person or a member of the immediate family of that person as defined in subsection F of this section to feel frightened, intimidated, threatened, harassed, or molested; and
2. Actually causes the person being followed or harassed to feel terrorized, frightened, intimidated, threatened, harassed, or molested, shall, upon conviction, be guilty of the crime of stalking, which is a misdemeanor punishable by imprisonment in a county jail for not more than one (1) year or by a fine of not more than One Thousand Dollars (\$1,000.00), or by both such fine and imprisonment
3. For purposes of this section:
 1. "Harasses" means a pattern or course of conduct directed toward another individual that includes, but is not limited to, repeated or continuing unconsented contact, that would cause a reasonable person to suffer emotional distress, and that actually causes emotional distress to the victim. Harassment shall include harassing or obscene phone calls as prohibited by Section 1172 of this title and conduct prohibited by Section 850 of this title. Harassment does not include constitutionally protected activity or conduct that serves a legitimate purpose;
 2. "Course of conduct" means a pattern of conduct composed of a series of two or more separate acts over a period of time, however short, evidencing a continuity of purpose. Constitutionally protected activity is not included within the meaning of "course of conduct";

3. "Emotional distress" means significant mental suffering or distress that may, but does not necessarily require, medical or other professional treatment or counseling;
4. "Unconsented contact" means any contact with another individual that is initiated or continued without the consent of the individual, or in disregard of that individual's expressed desire that the contact be avoided or discontinued. Constitutionally protected activity is not included within the meaning of unconsented contact. Unconsented contact includes but is not limited to any of the following:
 - a. following or appearing within the sight of that individual,
 - b. approaching or confronting that individual in a public place or on private property,
 - c. appearing at the workplace or residence of that individual,
 - d. entering onto or remaining on property owned, leased, or occupied by that individual,
 - e. contacting that individual by telephone,
 - f. sending mail or electronic communications to that individual, and
 - g. placing an object on, or delivering an object to, property owned, leased, or occupied by that individual.
5. "Member of the immediate family", for the purposes of this section, means any spouse, parent, child, person related within the third degree of consanguinity or affinity or any other person who regularly

resides in the household or who regularly resided in the household within the prior six (6) months.

6. “Following” shall include the tracking of the movement or location of an individual through the use of a Global Positioning System (GPS) device or other monitoring device by a person, or person who acts on behalf of another, without the consent of the individual whose movement or location is being tracked; provided, this shall not apply to the lawful use of a GPS device or other monitoring device or to the use by a new or used motor vehicle dealer or other motor vehicle creditor of a GPS device or other monitoring technology, including a device containing technology used to remotely disable the ignition of a motor vehicle, in connection with lawful action after default of the terms of a motor vehicle credit sale, loan or lease, and with the express written consent of the owner or lessee of the motor vehicle.

21 Okla. Stat. § 1173.

PREVENTIVE MEASURES

OSU encourages students to help in preventing harmful and negative incidents by being responsible for their own personal safety, intervening if they are a bystander of such incidents, and educating themselves through university-sponsored trainings.

AWARENESS EDUCATION

Oklahoma State University takes acts of sexual violence and sexual harassment seriously. In an effort to educate students and comply with the Violence Against Women Act and the Office for Civil Rights federal guidelines, ALL NEW STUDENTS ARE REQUIRED TO COMPLETE ONLINE TRAINING ON SEXUAL VIOLENCE



PREVENTION. A hold will be placed on each new student’s account, which will affect enrollment for the subsequent semester, until the training has been completed. Training should take around 60 minutes.

To complete the training, follow these steps:

1. Go to 1is2many.okstate.edu
2. Log in with your Okey account information

Additionally, Student Conduct Education and Administration provides education on sexual violence to any group of students, faculty or staff upon request. Topics include, but are not limited to, sexual assault, sexual harassment, the conduct process for sexual misconduct, how to support a victim, bystander intervention, prevention strategies and resources available for victims.

BYSTANDER INTERVENTION

To prevent sexual violence, it is important that people are approached as potential witnesses or bystanders to behaviors related to sexual violence. As a witness to these behaviors, there are certain ways to step up to prevent a risky situation from escalating.

In order to intervene, someone has to:

1. NOTICE THE INCIDENT

Bystanders first must notice the incident taking place. It is important to become attuned to what situations may be risky (e.g. if you’re at a party, and you see someone stumbling as they’re being led into a different room, this is a risky situation).

2. INTERPRET THE INCIDENT AS EMERGENCY

By “emergency,” we mean a situation wherein there is risk of sexual or physical violence occurring in the near future.

3. ASSUME RESPONSIBILITY FOR INTERVENING

It has been found that often, people believe that someone else will help in a situation where there are many people around. However, it is important to realize that others may also be thinking the same thing. If you’re unsure if you should do something, ask a friend what they think — it might be that they’ve been thinking the same thing.

4. HAVE THE BYSTANDER INTERVENTION SKILLS TO HELP

There are a number of different techniques that someone can use to intervene in a risky situation.

SEX OFFENDER REGISTRATION

In accordance with applicable state and federal laws, information about registered sex offenders who may be attending or working at OSU is available to the campus community at police.okstate.edu. An additional link is provided to the Stillwater Police Department’s list of registered sex offenders residing in the Stillwater area. The Stillwater Police Department’s website is stillwaterpolicedept.org.

Statistics REPORT OF STATISTICS

Oklahoma State University has been reporting its crime statistics to the Federal Bureau of Investigation (FBI) according to its Uniform Crime Reporting guidelines since 1971. The statistics are published annually in the “Crime in the United States” publication from the U.S. Department of Justice. The tables located on page 17 and 18, (Campus Crime Report) comply with Title II of the Federal Campus Crime Awareness and Campus Security Act of 1990 and 1998, and subsequent revisions.

Campus crime, arrest and referral statistics include those reported to the OSU Police, designated campus security authorities and local law enforcement agencies. When a campus security authority becomes aware of a crime, they are required to complete a report that does not contain any personally identifying information about the students or persons involved. The report is then submitted to OSU Police, who are responsible for compiling and preparing the statistics.

CAMPUS CRIME STATISTICS

The crime and arrest statistics reported are those that occurred within the jurisdictional boundaries of campus. They do not include off-campus private housing, which is within the Stillwater Police Department jurisdiction. OSU, however, reports crime and arrest statistics for fraternities and sororities, although they are within the jurisdictional boundaries of the City of Stillwater. Crimes occurring on public property immediately adjacent to the campus are also reported when available. Crime statistics concerning other locations are available at the Stillwater Police Department.

CRIMES DISCLOSED TO PASTORAL OR MENTAL HEALTH COUNSELOR

To be exempt from disclosing reported offenses, pastoral or professional counselors must be acting in their roles of pastoral or professional counselors. This exemption does not relieve counselors of the duty to exercise reasonable care to protect a foreseeable victim from danger posed by the person being counseled or to make reports mandated by law. When speaking to a victim or witness to a crime, counselors are encouraged to inform the individual of options to report the crime to the police.

A pastoral counselor is a person who is associated with a religious order or denomination, is recognized by that religious order or denomination as someone who provides confidential counseling, and is functioning within the scope of that recognition as a pastoral counselor.

A mental health counselor is a person whose official responsibilities include providing mental health counseling to members of the institution’s community and who is functioning within the scope of his or her license or certification. This definition applies even to professional counselors who are not employees of the institution but are under contract to provide counseling at the institution.

DEFINITIONS OF CRIMINAL OFFENSES

The following definitions are those used in the Uniform Crime Reporting System of the United States Department of Justice, Federal Bureau of Investigation:

AGGRAVATED ASSAULT

An unlawful attack of one person by another for the purpose of inflicting severe or aggravated bodily injury. This type of assault usually is accompanied by the use of a weapon or means likely to produce death or great bodily harm. It is not necessary that injury result from an aggravated assault when a gun, knife or other weapon is used that could and probably would result in serious personal injury if the crime were successfully completed.

ARSON

Any willful or malicious attempt to burn, with or without intent to defraud, a dwelling house, public building, motor vehicle, or aircraft or personal property of another. Only fires determined through investigation to have been willfully or maliciously set are classified as arson.

BURGLARY

The unlawful entry of a structure to commit a felony or theft. For reporting purposes, this definition includes: unlawful entry with the intent to commit a larceny or felony; breaking and entering with the intent to commit a larceny; housebreaking; safecracking; and all attempts to commit any of the aforementioned.

DATING VIOLENCE

Dating violence is committed by a person who is or has been in a social relationship of a romantic or intimate nature with another person. The existence of such relationship shall be determined based on the reporting party's statement and with consideration of the length of the relationship, the type of relationship, and the frequency of interaction between the

persons involved in the relationship. Dating violence includes but is not limited to sexual or physical abuse or the threat of such abuse. Dating violence does not include acts that meet the definition of domestic violence.

DOMESTIC VIOLENCE

Domestic violence is a felony or misdemeanor crime of violence committed by a:

- current or former spouse or intimate partner of the victim
- person with whom the victim shares a child in common
- person who is cohabitating with or has cohabited with the victim as a spouse or intimate partner
- person similarly situated to a spouse of the victim under the domestic or family violence laws of Oklahoma or
- any other person against an adult or youth victim who is protected from that person's acts under the domestic or family violence laws of Oklahoma

Domestic violence is a pattern of abusive behavior in any relationship that is used by one partner to gain or maintain power and control over another intimate partner. Domestic violence can be physical, sexual, emotional, economic or psychological actions or threats of actions that influence another person.

DRUG LAW VIOLATIONS

Violations of state and local laws relating to the unlawful possession, sale, use, growing, manufacturing, and making of narcotic drugs. The relevant substances include: opium or cocaine and their derivatives (morphine, heroin, codeine); marijuana; synthetic narcotics (Demerol, Methadone); and dangerous non-narcotic drugs (barbiturates, Benzedrine).

HATE CRIMES

A crime reported to local police agencies or to a campus security authority that manifests evidence that the victim was intentionally selected because of the perpetrator's bias against the victim. For the purposes of this definition, the categories of bias include the victim's actual or perceived race, religion, gender, gender identity, sexual orientation, ethnicity, national origin and disability.

LARCENY

The unlawful taking, carrying, leading or riding away of property from the possession or constructive possession of another without use of force or violence. It includes shoplifting, pocket-picking, purse snatching, thefts from motor vehicles to include parts and accessories, bicycles and computer thefts.

LIQUOR LAW VIOLATIONS

The violation of laws or ordinances prohibiting: the manufacture, sale, transporting, furnishing, possessing of intoxicating liquor; maintaining unlawful drinking places; bootlegging; operating a still; furnishing liquor to a minor or intemperate person; using a vehicle for illegal transportation of liquor; drinking on a train or public conveyance; and all attempts to commit any of the aforementioned. Drunkenness and driving under the influence are not included in this definition.

MANSLAUGHTER BY NEGLIGENCE

The killing of another person through gross negligence.

MOTOR VEHICLE THEFT

The theft or attempted theft of a motor vehicle by someone other than the registered owner.

MURDER AND NON-NEGLIGENT MANSLAUGHTER

The willful (non-negligent) killing of one human being by another.

ROBBERY

The taking or attempting to take anything of value from the care, custody or control of a person or persons by force or threat of force or violence and/or by putting the victim in fear.

SEX OFFENSES

Any sexual act directed against another person without the consent of the victim, including instances where the victim is incapable of giving consent.

SEXUAL ASSAULT

An offense that meets the definition of rape, fondling, incest or statutory rape, defined as follows:

- **RAPE** means the penetration, no matter how slight, of the vagina or anus with any body part or object, or oral penetration by a sex organ of another person, without the consent of the victim.
- **FONDLING** means the touching of the private body parts of another person for the purpose of sexual gratification, without the consent of the victim, including instances where the victim is incapable of giving consent because of his/her age or because of his/her temporary or permanent mental incapacity.

- **INCEST** means non-forcible sexual intercourse between persons who are related to each other within the degrees wherein marriage is prohibited by law.
- **STATUTORY RAPE** means non-forcible sexual intercourse with a person who is under the statutory age of consent (age 16).

STALKING

Stalking refers to one who engages in a course of conduct directed at a specific person that would cause a reasonable person to fear for his or her safety or the safety of others or suffer substantial emotional distress.

- **COURSE OF CONDUCT** means two or more acts, including, but not limited to, acts in which the stalker directly, indirectly, or through third parties, by any action, method, device or means, follows, monitors, observes, surveils, threatens or communicates to or about a person or interferes with a person's property.
- **REASONABLE PERSON** means a reasonable person under similar circumstances and with similar identities to the victim.
- **SUBSTANTIAL EMOTIONAL DISTRESS** means significant mental suffering or anguish that may, but does not necessarily, require medical or other professional treatment or counseling.

WEAPON LAW VIOLATIONS

The violation of laws or ordinances dealing with weapon offenses, regulatory in nature, such as: manufacture, sale, or possession of deadly weapons; carrying deadly weapons, concealed or openly; furnishing deadly weapons to minors; alien possessing deadly weapons; and all attempts to commit

any of the aforementioned. OSU policy prohibits deadly weapons on the university campus with limited exceptions. Firearms on campus must be stored at the OSU Police Department.

DEFINITION OF TERMS FOR STATISTICAL CHARTS

“On-Campus” means any building or property owned or controlled by Oklahoma State University, within the same reasonably contiguous geographic area of the institution and used by the institution in direct support of, or in a manner related to, the institution's educational purposes, including residence halls. It also includes property within the same reasonably contiguous geographic area of the institution that is owned by the institution but controlled by another person, is used by students, and supports institution purposes (such as food or other retail vendor). The Department of Education has clarified “reasonably contiguous geographic area” to generally mean within 1 mile of the campus border.

“Residential” includes those buildings designated as residence halls and university apartments where students are housed. It also includes housing for officially and not officially recognized student groups, including fraternity or sorority houses, that are owned or controlled by Oklahoma State University or are located on property that OSU owns or controls. The reasonably contiguous geographic area also applies for these building types.

“Non-Campus Building or Property” includes buildings or property owned or controlled by a student organization, such as a fraternity or sorority, recognized by the institution,

and any building or property (other than a branch campus) owned or controlled by an institution that is used in direct support of, or in relation to, the institution's educational purposes, is used by students and is not within the same reasonably contiguous geographical area of the institution. This includes Lake Carl Blackwell and research land west of the main campus.

"Public Property" is defined as all public property that is within the same reasonably contiguous geographic area of the institution, such as a sidewalk, a street or other thoroughfare,

or parking facility, and is adjacent to a facility owned or controlled by the institution, if the facility is used by the institution in direct support of, or in a manner related to the institution's educational purposes. For the purposes of the Clery Act, Oklahoma State University defines roadways that pass through or are adjacent to campus and maintained by the municipality of Stillwater as public property.



CRIMES REPORTED BY OSU POLICE DEPARTMENT, CAMPUS SECURITY AUTHORITIES, AND OTHER LAW ENFORCEMENT AGENCIES — 2016–2018

This chart includes offenses that were reported to the Oklahoma State University Police Department, Campus Security Authorities, and Local Law Enforcement Agencies in accordance with the Uniform Crime Reporting procedures and the Jeanne Clery Disclosure of Campus Security Policy and Campus Crime Statistics Act.

OFFENSE TYPE (INCLUDES ATTEMPTS)	YEAR	ON CAMPUS	NON-CAMPUS	PUBLIC PROPERTY	TOTAL	RESIDENTIAL FACILITIES ¹
MURDER/NON-NEGLIGENT MANSLAUGHTER	2018	0	0	0	0	0
	2017	0	0	0	0	0
	2016	0	0	0	0	0
MANSLAUGHTER BY NEGLIGENCE	2018	0	0	0	0	0
	2017	0	0	0	0	0
	2016	0	0	0	0	0
SEX OFFENSES						
<i>Rape</i>	2018	20	5	0	25	17
	2017	12	1	0	13	12
	2016	6	1	0	7	6
<i>Fondling</i>	2018	8	0	0	8	2
	2017	6	0	0	6	6
	2016	2	0	0	2	1
<i>Incest</i>	2018	0	0	0	0	0
	2017	0	0	0	0	0
	2016	0	0	0	0	0
<i>Statutory Rape</i>	2018	0	0	0	0	0
	2017	1	0	0	1	1
	2016	0	0	0	0	0
ROBBERY	2018	0	0	0	0	0
	2017	0	0	0	0	0
	2016	1	0	1	2	1
AGGRAVATED ASSAULT	2018	0	1	0	1	0
	2017	2	0	0	2	0
	2016	2	0	0	2	0
BURGLARY	2018	33	8	0	41	10
	2017	49	1	0	50	15
	2016	43	5	0	48	14

¹ Campus residential facilities are a subset of the “On Campus” category. Statistical data included in this column is also included in the “On Campus” column.

CRIMES REPORTED BY OSU POLICE DEPARTMENT, CAMPUS SECURITY AUTHORITIES, AND OTHER LAW ENFORCEMENT AGENCIES — 2016–2018

This chart includes offenses that were reported to the Oklahoma State University Police Department, Campus Security Authorities, and Local Law Enforcement Agencies in accordance with the Uniform Crime Reporting procedures and the Jeanne Clery Disclosure of Campus Security Policy and Campus Crime Statistics Act.

MOTOR VEHICLE THEFT	2018	0	0	1	1	0
	2017	0	0	0	0	0
	2016	3	0	0	3	0
ARSON	2018	1	0	0	1	1
	2017	1	0	0	1	0
	2016	0	0	0	0	0
DATING VIOLENCE	2018	1	1	0	2	1
	2017	6	1	0	7	4
	2016	6	0	1	7	6
DOMESTIC VIOLENCE	2018	4	9	0	13	2
	2017	7	1	0	8	4
	2016	11	0	0	11	8
STALKING	2018	10	0	0	10	1
	2017	7	0	0	7	2
	2016	2	0	0	2	2
LIQUOR LAW ARRESTS	2018	67	0	8	75	9
	2017	41	2	16	59	5
	2016	18	1	13	32	6
DRUG LAW ARRESTS	2018	30	2	4	36	24
	2017	40	1	14	55	27
	2016	70	0	42	112	41
WEAPONS LAW ARRESTS	2018	0	1	2	3	0
	2017	1	0	0	1	0
	2016	1	0	2	3	0
LIQUOR LAW VIOLATIONS REFERRED FOR DISCIPLINARY ACTION	2018	146	1	0	147	143
	2017	247	0	0	247	234
	2016	264	2	0	266	258
DRUG LAW VIOLATIONS REFERRED FOR DISCIPLINARY ACTION	2018	13	0	0	13	11
	2017	45	0	0	45	38
	2016	2	0	0	2	2

CRIMES REPORTED BY OSU POLICE DEPARTMENT, CAMPUS SECURITY AUTHORITIES, AND OTHER LAW ENFORCEMENT AGENCIES — 2016–2018

This chart includes offenses that were reported to the Oklahoma State University Police Department, Campus Security Authorities, and Local Law Enforcement Agencies in accordance with the Uniform Crime Reporting procedures and the Jeanne Clery Disclosure of Campus Security Policy and Campus Crime Statistics Act.

WEAPONS LAW VIOLATIONS REFERRED FOR DISCIPLINARY ACTION	2018	0	0	0	0	0
	2017	1	0	0	1	1
	2016	0	0	0	0	0

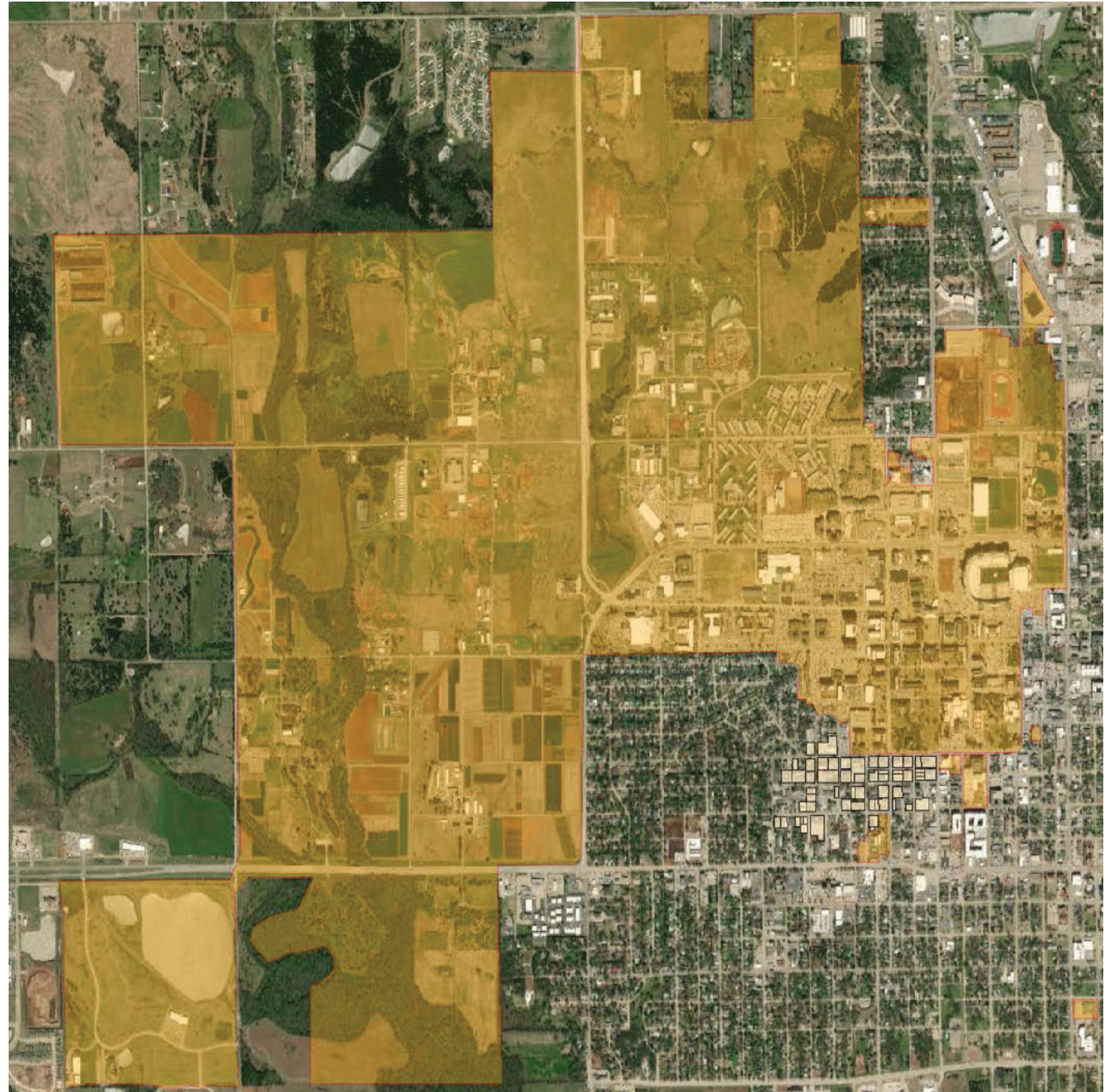
Hate Crimes — No hate crimes were reported in 2016; One vandalism with ethnicity bias was reported in 2017; One intimidation with sexual orientation bias was reported in 2018.

Unfounded Crimes — If a reported crime is investigated by law enforcement authorities and found to be false or baseless, the crime is “unfounded”. Only sworn or commissioned law enforcement personnel may unfound a crime. One case in 2018 was determined to be unfounded.



OSU “ON CAMPUS” BOUNDARIES AS DEFINED BY THE 2018 CLERY ACT

This map denotes the 2018 OSU Stillwater “On Campus” boundaries as defined by the Clery Act. It includes facilities defined as “on-campus residential” and Greek Life properties, which are considered “non-campus” by the Clery Act.



Map courtesy of OSU Facilities Management Energy Services GIS

Fire

ANNUAL FIRE SAFETY REPORT

Institutions are required to keep a fire log that states the nature of the fire, date, time and general location of each fire in on-campus student housing facilities. Oklahoma State University complies with this rule by including all fire-related incidents in the Annual Fire Safety Report and Fire Log maintained by Environmental Health and Safety. To view the fire log and related information, visit the Environmental Health and Safety website for the Fire Log and related incidents at: police.okstate.edu/activity-summary.

The Annual Housing Fire Safety Report is required by the Higher Education Opportunity Act (HEOA) for any Title IV institution that maintains an on-campus student housing facility. Per HEOA, an institution that maintains an on-campus student housing facility must collect fire statistics, publish an Annual Fire Safety Report and keep a fire log.

The Clery Act was amended by HEOA in 2008, requiring future reports to begin including campus housing fire safety statistics as well.

STEPS TO FOLLOW IF YOU SEE A FIRE

1. Activate the nearest fire alarm.
2. Call 911. Give your name, address, location and the extent of the fire.
3. Calmly alert people in the building, and evacuate the building by following EXIT signs.

STEPS TO FOLLOW IF YOU ARE CAUGHT IN A FIRE

1. Remain calm.

2. Before opening a door, feel it with the back of your hand. If it is HOT:

- a. Do not open the door.
- b. Open the windows. If possible, lower the top half of the window to let out heat and smoke and raise the lower half to let in fresh air.
- c. Seal crack around door with towels, linens or clothes. Soak these items in water if possible.
- d. To attract attention, hang objects out the window. Shout for help.
- e. Keep low to the floor. Take short breaths to avoid inhaling smoke. Place a wet towel over your nose and mouth. Keep your head six to eight inches off the floor.

3. If the door is **NOT HOT**, brace yourself against the door and open it slowly. If hot air or fire rushes in, close the door and do not open again.
4. If you can leave, close all doors behind you and proceed to the nearest safe exit. Leave the building and stand clear of the fire. Provide directions to police and fire personnel when they arrive.

STEPS TO FOLLOW FOR FIRE PREVENTION:

1. Know every regular and emergency exit. Know how to activate the alarm system and what it sounds like. Know the location of fire extinguishers and how to operate them.
2. Arrange the contents of your room with fire safety in mind. Maintain clear and unobstructed access to your room door from both inside and outside.

3. Do not overload electrical outlets. Do not use broken, frayed or cracked electrical cords. Do not suspend lamps or lights by their own cords.
4. OSU is a tobacco- and vaping-free campus. You may not have a lit tobacco product or vape anywhere on campus.
5. Do not allow excess clutter of flammable materials.

For further information, contact Environmental Health Services at 405-744-7241.

FIRE REPORTING

Per federal law, Oklahoma State University is required to annually disclose statistical data on all fires that occur in on-campus housing facilities. Listed below are the **NON-EMERGENCY** phone numbers to call to report fires that have **ALREADY** been extinguished in on-campus student housing. These phone numbers are for fires for which you are unsure whether the OSU Police may already be aware. If you find evidence of such a fire or if you hear about such a fire, please contact one of the following:

OSU POLICE — 405-744-6523 or the campus safety app

OSU ENVIRONMENTAL HEALTH AND SAFETY — 405-744-7241

OSU HOUSING AND RESIDENTIAL LIFE — 405-744-5592

When calling, provide as much information as possible about the location, date, time and cause of the fire. It is critical to document all reports of residential fires in the annual report.

FIRE SAFETY EDUCATION AND TRAINING PROGRAMS

Oklahoma State University strives to provide a safe and friendly environment for all of our campus community. To assist in this manner, several measures are taken. These

include regular fire and life safety inspections in all campus facilities, various educational events are coordinated by the hall staff (i.e., Residential Community Educators, Community Mentors, etc.) that provide ongoing education and safety awareness, and the development of university rules and standard administrative procedures regarding fire safety.

The OSU Environmental Health and Safety website provides safety information regarding fire safety and other life safety topics and is accessible to students, faculty and staff:

ehs.okstate.edu/fireandlifesafety.html.

Environmental Health and Safety conducts annual laboratory, fume hood, safety shower and eyewash station inspections to ensure the safety of OSU laboratory employees. OSU has a large laboratory footprint with over 750 laboratories that study topics ranging from food processing to nanomaterials. However, all laboratories have similar requirements to ensure safety. These laboratory and life-safety requirements include:

1. Appropriate laboratory signage that provides employees, first responders and visitors information concerning the potential hazards within a laboratory. In addition, the locations of laboratory safety equipment must be well marked and easily found.
2. Employee access to personal protective equipment that includes safety glasses/goggles, gloves, laboratory coat and any other appropriate protection.
3. The availability of easy to locate and functional laboratory safety equipment. Laboratory safety equipment includes fume hoods, fire extinguishers, eyewash stations and safety showers.
4. The proper use of compressed gases.

5. Proper labeling and storage of hazardous chemicals and waste. Proper labeling reduces the risk of unexpected employee exposure, and proper storage reduces the likelihood of dangerous chemical reaction due to mixing incompatible chemicals.
6. Elimination of potential electric shock and fire by identifying and repairing exposed wires, exposed outlets, improper outlets near water sources, non-compliant circuit breakers and overloaded circuits.
7. Appropriate training in laboratory-specific hazards for affected employees.
8. Clean laboratories with unobstructed access to emergency exits and laboratory safety equipment.
9. Pressure and vacuum systems that are properly equipped to avoid explosions or implosions.

HOUSING AND RESIDENTIAL LIFE FIRE SAFETY POLICIES

To provide for the safety of all residents, Housing and Residential Life has developed an extensive set of guidelines and policies for all student housing. These documents are available electronically on the Housing and Residential Life web page at reslife.okstate.edu/policies. This publication covers all policies for Residential Life facilities and includes information pertinent to fire safety.

Each residence hall has a designated Point of Assembly for residents to gather in the event of an emergency resulting in fire alarm activation. Residents are to evacuate the residence hall in the event of fire alarm activation. Information

regarding Points of Assembly are outlined for staff in their training manual and located in their on-call bag. Residents are informed that fire drills are conducted each semester to prepare them for an actual emergency. The Housing and Residential Life Community Standards Handbook available online at reslife.okstate.edu/policies/ includes a section on Fire Safety, which each resident is to follow in the event of an emergency.

ON-CAMPUS HOUSING

Oklahoma State University provides a wealth of choices to choose from when it comes to on-campus housing. There are four types of housing available: community style, suites, deluxe suites and apartments.

Housing and Residential Life staff is on-site 24 hours a day, including weekends and holidays. Housing and Residential Life personnel may include community mentors, residential community educators, assistant residential community educators, desk clerks and assistant directors for Housing and Residential Life. Housing and Residential Life is responsible for all on-campus housing facilities at OSU.

HOUSING AND RESIDENTIAL LIFE PROHIBITED ITEMS AND EQUIPMENT

Any prohibited or misused appliances or equipment will be confiscated by the hall staff, and individuals responsible will be subject to disciplinary action.

Appliances

Prohibited appliances are: open-fire or open-coil cooking appliances, such as electric griddles and George Foreman Grills (except in Bost, Carreker East, Carreker West, Davis, Kamm, Peterson-Friend, McPherson, Morsani-Smith,

Payne-Ellis, Sitlington, and Young Halls). Also prohibited are portable heaters, air conditioners, large amplifiers (public address system, oversize stereo and electric musical instrument), wireless routers and halogen lamps. Students may have one microwave oven in any residence hall room. Microwaves must be rated 900 watts or less at the highest setting. Cooking appliances may only be operated in kitchen areas. Any electrical extension cord that is used must be 14 gauge or heavier. Do not nail extension cords to walls, place them under rugs or beds, string them on pipes, etc. Periodically inspect all cords and appliances for cracks or other defects. Please be aware that overloading an electric circuit with too many appliances can cause problems. Some appliances or furnishings have a higher likelihood of contributing to unsafe environments for community living. Housing and Residential Life regulates the use of these appliances to ensure the safety and security of the community.

Open Flames/Candles/Incense/Flammable Liquids:

Burning candles and incense, as well as kerosene lamps and other flammable liquid fueled devices, are prohibited in all university-owned housing. Decorative candles must have non-burned, clipped wicks or be wickless. The No. 1 cause of residence hall and apartment fires is open flames. Incense, as well as being a fire hazard, can be an eye and respiratory irritant. To ensure the safety and comfort of our community, Housing and Residential Life prohibits these items.

Fireworks and Explosives

Under state and federal law, fireworks and explosives are prohibited in Housing and Residential Life buildings and on university grounds.

Refrigerators

Refrigerators are permitted with a limit of 3 amps and 5 cubic feet per room. The university is not responsible for loss of items due to power outages.

Decorations

For the safety of the community, no live trees or live cut greenery are permitted, lighting/wiring may not stretch across doorways or across common areas, and decorative lighting must be turned off when unattended. Use of paint or material that will result in permanent changes to the room/suite/apartment or common area(s) are strictly prohibited. Decorations may not cover more than 1/3 (33%) of door and surface area, be three-dimensional nor obstruct the peep hole or the room number. Decorations deemed unsafe by Housing and Residential Life may be removed.

Windows/Air Vent Blockage

In Iba, Parker, Wentz and University Commons Halls, the windows need to remain closed and in all buildings air vents unobstructed. No items should be hung in the windows, placed on the ledges or on balcony or patio railings in any Housing and Residential Life facilities.

Emergency/Safety Equipment

Tampering, damaging or inhibiting the use of emergency/safety equipment, including exterior residence hall doors, in any residence hall is prohibited. Residents may not use emergency equipment for any purpose other than emergency use. Residents involved in such activities will be subject to disciplinary action and may be removed from university housing. This regulation includes, but is not limited to, fire

extinguishers, heat and smoke detectors, exit signs, fire alarm pull stations or locked exterior doors.

Smoking/Tobacco/Vaping Use

Oklahoma State University is a tobacco- and vaping-free environment; therefore, all residence halls and apartments are smoke-free and vaping-free. No smoking, tobacco or vaping use is permitted on university property.

Motor Vehicles

Motor vehicles, including recreational vehicles, are prohibited in Housing and Residential Life buildings and on university grounds. These items must be kept in the parking lots.

Hoverboards and Drones

Hoverboards (also known as self-balancing scooters) and drones, including possession and use, are prohibited in all campus housing. This applies to all residence halls and campus apartments, including Family and Graduate Student Housing.

HEALTH & SAFETY INSPECTIONS

Each semester Housing and Residential Life staff will inspect rooms for safety concerns. When performing Health and Safety checks, staff will:

- Post notification for the community at least twenty-four (24) hours prior to the inspection, when possible
- Knock and announce themselves before entering
- Enter rooms in pairs and wear nametags
- Inspect only items that are in plain view (no closets, drawers, or refrigerators will be opened)

- Look for: unsafe cord placement (over doors, across door jams); unclean environment (rotting food, mold, offensive odor); doorway obstruction; electrical outlet overloading; maintenance concerns; pests, and paper covering more than 1/3 of door/walls.
- Document any policy violations

FIRE SAFETY

FIRE DRILLS

For the protection and safety of our community, announced and unannounced fire drills will be held at the direction of the OSU fire marshal during the academic year. To become familiar with evacuation routes, cooperation is mandatory. Anytime the alarm sounds, residents are to leave the building. Participation in fire evacuations is required by state law.

FIRE ALARM INSTRUCTIONS

To ensure the safety of all persons within the residence hall or apartment, occupants should be familiar with proper procedures in responding to fire alarms. These procedures include:

- In inclement weather, wear a coat and shoes and carry a towel.
- Close windows and leave lights on in room. Take room key.
- Leave door closed and walk to exit. If smoke is encountered, stay low for air.
- Do not use an elevator.

PHYSICAL ASSISTANCE FOR EVACUATION: Call the OSU Police at 405-744-6523 or 911.

- If unable to leave room, place a towel under the door if smoke is either seen or smelled.
- Hang a towel out of the window, indicating that a person is in that room.
- Await assistance in the room or area of refuge.

SMOKE DETECTOR & SPRINKLER SYSTEM

Each residence hall room is equipped with a smoke detector. Smoke detectors in rooms are inspected regularly by Facilities Management.

Sprinkler systems have been installed for added safety in all residence facilities. To make the sprinkler system as effective as possible:

- Sprinklers must never be painted.
- Nothing may be hung from the sprinkler piping or sprinkler heads.
- Sprinkler heads may never be obstructed or altered.
- Nothing may be stored within 18 inches from the sprinkler head.
- Frisbees, footballs, baseballs, etc., are not to be thrown in rooms, hallways or other public areas.
- Report any damages to the sprinkler system to the front desk immediately.

By a mandate of the State Fire Marshal, an action plan has been adopted by OSU and Housing and Residential Life. Regulations are in effect regarding tampering with any fire safety equipment. This includes, but is not limited to, smoke detectors, sprinkler heads, fire alarms and fire

extinguishers. The first offense of tampering will result in the student(s) being assessed a fine of \$500 (if the room is double occupancy, then each student will be assessed \$250). The student(s) will also be placed on Housing and Residential Life Probation and receive an educational sanction. On the second offense, a \$500 fine will be assessed (\$500 to each resident if double occupancy); the student(s) will be removed from university housing, and the contract(s) must be paid in full; an incident report will be forwarded to OSU Police Department and Environmental Health and Safety for a code violation citation with a potential fine of \$5,000 and one year imprisonment; and student(s) will be referred to Student Conduct Education and Administration.

If at any time the smoke detector starts beeping periodically, it may mean that the battery is low. If this happens, call the Residential Life Facilities Management Office at 405-744-8510, and someone will replace the battery. Please do not replace the battery yourself.

The following chart lists the on-campus residential facilities and shows fire safety systems within each of those facilities. The additional charts provide information about fires that have occurred in a residential facility and whether they caused any injuries, deaths or damage.

2018 STATISTICS AND RELATED INFORMATION REGARDING FIRES IN RESIDENTIAL FACILITIES

NAME OF FACILITY	TOTAL FIRES IN FACILITY	FIRE NUMBER	CAUSE OF FIRE	NUMBER OF FIRES REQUIRING MEDICAL TREATMENT	NUMBER OF DEATHS RELATED TO A FIRE	VALUE OF PROPERTY DAMAGE OF FIRE
DAVIS HALL	0	0	NA	0	0	\$0.00
MORSANI HALL	0	0	NA	0	0	\$0.00
SMITH HALL	0	0	NA	0	0	\$0.00
YOUNG HALL	0	0	NA	0	0	\$0.00
ZINK HALL	0	0	NA	0	0	\$0.00
ALLEN HALL	0	0	NA	0	0	\$0.00
BOOKER HALL	0	0	NA	0	0	\$0.00
STINCHCOMB HALL	0	0	NA	0	0	\$0.00
BOST HALL	0	0	NA	0	0	\$0.00
SITLINGTON HALL	0	0	NA	0	0	\$0.00
PETERSON HALL	0	0	NA	0	0	\$0.00
FRIEND HALL	0	0	NA	0	0	\$0.00
KAMM HALL	0	0	NA	0	0	\$0.00
BRUMLEY APTS. #120	0	0	NA	0	0	\$0.00
BRUMLEY APTS. #121	0	0	NA	0	0	\$0.00
BRUMLEY APTS. #122	0	0	NA	0	0	\$0.00
BRUMLEY APTS. #123	0	0	NA	0	0	\$0.00
BRUMLEY APTS. #124	0	0	NA	0	0	\$0.00
BRUMLEY APTS. #125	0	0	NA	0	0	\$0.00
VILLAGE APTS. A	0	0	NA	0	0	\$0.00
VILLAGE APTS. B	0	0	NA	0	0	\$0.00
VILLAGE APTS. C	0	0	NA	0	0	\$0.00
VILLAGE APTS. D	0	0	NA	0	0	\$0.00
VILLAGES APTS. E	0	0	NA	0	0	\$0.00
VILLAGE APTS. F	0	0	NA	0	0	\$0.00
PATCHIN SUITES	0	0	NA	0	0	\$0.00
JONES SUITES	0	0	NA	0	0	\$0.00
WENTZ HALL	0	0	NA	0	0	\$0.00
STOUT HALL	0	0	NA	0	0	\$0.00
DRUMMOND HALL	0	0	NA	0	0	\$0.00

2018 STATISTICS AND RELATED INFORMATION REGARDING FIRES IN RESIDENTIAL FACILITIES

NAME OF FACILITY	TOTAL FIRES IN FACILITY	FIRE NUMBER	CAUSE OF FIRE	NUMBER OF FIRES REQUIRING MEDICAL TREATMENT	NUMBER OF DEATHS RELATED TO A FIRE	VALUE OF PROPERTY DAMAGE OF FIRE
KERR HALL	0	0	NA	0	0	\$0.00
IBA HALL	0	0	NA	0	0	\$0.00
EAST BENNETT HALL	1	1	Faulty Light Ballast	0	0	\$300.00
WEST BENNETT HALL	0	0	NA	0	0	\$0.00
DEMAREE APTS. S-36	0	0	NA	0	0	\$0.00
DEMAREE APTS. S-37	0	0	NA	0	0	\$0.00
DEMAREE APTS. S-38	0	0	NA	0	0	\$0.00
DEMAREE APTS. S-39	0	0	NA	0	0	\$0.00
DEMAREE APTS. S-40	0	0	NA	0	0	\$0.00
DEMAREE APTS. S-41	0	0	NA	0	0	\$0.00
DEMAREE APTS. S-42	0	0	NA	0	0	\$0.00
PROSSER APTS. N-16	0	0	NA	0	0	\$0.00
PROSSER APTS. N-17	0	0	NA	0	0	\$0.00
PROSSER APTS. N-18	0	0	NA	0	0	\$0.00
PROSSER APTS. N-27	0	0	NA	0	0	\$0.00
PROSSER APTS. N-20	0	0	NA	0	0	\$0.00
PROSSER APTS. N-21	0	0	NA	0	0	\$0.00
PROSSER APTS. N-22	0	0	NA	0	0	\$0.00
PROSSER APTS. N-23	0	0	NA	0	0	\$0.00
PROSSER APTS. N-24	0	0	NA	0	0	\$0.00
PROSSER APTS. N-25	0	0	NA	0	0	\$0.00
PROSSER APTS. N-26	0	0	NA	0	0	\$0.00
PROSSER APTS. N-28	0	0	NA	0	0	\$0.00
WILLIAMS APTS. N-101	0	0	NA	0	0	\$0.00
WILLIAMS APTS. N-102	0	0	NA	0	0	\$0.00
WILLIAMS APTS. N-103	0	0	NA	0	0	\$0.00
WILLIAMS APTS. N-104	0	0	NA	0	0	\$0.00
WILLIAMS APTS. N-105	0	0	NA	0	0	\$0.00
PROSSER APTS. N-12	0	0	NA	0	0	\$0.00
PROSSER APTS. N-13	0	0	NA	0	0	\$0.00

2018 STATISTICS AND RELATED INFORMATION REGARDING FIRES IN RESIDENTIAL FACILITIES

NAME OF FACILITY	TOTAL FIRES IN FACILITY	FIRE NUMBER	CAUSE OF FIRE	NUMBER OF FIRES REQUIRING MEDICAL TREATMENT	NUMBER OF DEATHS RELATED TO A FIRE	VALUE OF PROPERTY DAMAGE OF FIRE
PROSSER APTS. N-14	0	0	NA	0	0	\$0.00
PROSSER APTS. N-15	0	0	NA	0	0	\$0.00
PROSSER APTS. N-19	0	0	NA	0	0	\$0.00
STEVENS APTS. S-70	0	0	NA	0	0	\$0.00
STEVENS APTS. S-70	0	0	NA	0	0	\$0.00
STEVENS APTS. S-71	0	0	NA	0	0	\$0.00
STEVENS APTS. S-72	0	0	NA	0	0	\$0.00
STEVENS APTS. S-73	0	0	NA	0	0	\$0.00
STEVENS APTS. S-74	0	0	NA	0	0	\$0.00
STEVENS APTS. S-75	0	0	NA	0	0	\$0.00
STEVENS APTS. S-76	0	0	NA	0	0	\$0.00
STEVENS APTS. S-90	0	0	NA	0	0	\$0.00
STEVENS APTS. S-91	0	0	NA	0	0	\$0.00
STEVENS APTS. S-92	0	0	NA	0	0	\$0.00
WEST APTS. S-80	0	0	NA	0	0	\$0.00
WEST APTS. S-81	0	0	NA	0	0	\$0.00
WEST APTS. S-82	0	0	NA	0	0	\$0.00
WEST APTS. S-83	0	0	NA	0	0	\$0.00
WEST APTS. S-84	0	0	NA	0	0	\$0.00
WEST APTS. S-85	0	0	NA	0	0	\$0.00
WEST APTS. S-86	0	0	NA	0	0	\$0.00
WEST APTS. S-87	0	0	NA	0	0	\$0.00
WEST APTS. S-88	0	0	NA	0	0	\$0.00
WEST APTS. S-89	0	0	NA	0	0	\$0.00
MCPHERSON HALL	0	0	NA	0	0	\$0.00
PAYNE-ELLIS HALL	0	0	NA	0	0	\$0.00
CARREKER HALL WEST	0	0	NA	0	0	\$0.00
CARREKER HALL EAST	0	0	NA	0	0	\$0.00
UNIVERSITY COMMONS NORTH	0	0	NA	0	0	\$0.00

2018 STATISTICS AND RELATED INFORMATION REGARDING FIRES IN RESIDENTIAL FACILITIES

NAME OF FACILITY	TOTAL FIRES IN FACILITY	FIRE NUMBER	CAUSE OF FIRE	NUMBER OF FIRES REQUIRING MEDICAL TREATMENT	NUMBER OF DEATHS RELATED TO A FIRE	VALUE OF PROPERTY DAMAGE OF FIRE
UNIVERSITY COMONNS SOUTH	1	1	<i>Paper in trash can</i>	0	0	\$0.00
UNIVERSITY COMMONS WEST	0	0	NA	0	0	\$0.00
HELMS HALL	0	0	NA	0	0	\$0.00
BEEF CATTLE ARENA	0	0	NA	0	0	\$0.00
SWINE EDUCATION AND RESEARCH CENTER	0	0	NA	0	0	\$0.00
TOTAL	2	2		0	0	\$300.00



2017 STATISTICS AND RELATED INFORMATION REGARDING FIRES IN RESIDENTIAL FACILITIES

NAME OF FACILITY	TOTAL FIRES IN FACILITY	FIRE NUMBER	CAUSE OF FIRE	NUMBER OF FIRES REQUIRING MEDICAL TREATMENT	NUMBER OF DEATHS RELATED TO A FIRE	VALUE OF PROPERTY DAMAGE OF FIRE
DAVIS HALL	0	0	NA	0	0	\$0.00
MORSANI HALL	0	0	NA	0	0	\$0.00
SMITH HALL	0	0	NA	0	0	\$0.00
YOUNG HALL	0	0	NA	0	0	\$0.00
ZINK HALL	0	0	NA	0	0	\$0.00
ALLEN HALL	0	0	NA	0	0	\$0.00
BOOKER HALL	0	0	NA	0	0	\$0.00
STINCHCOMB HALL	0	0	NA	0	0	\$0.00
BOST HALL	0	0	NA	0	0	\$0.00
SITLINGTON HALL	0	0	NA	0	0	\$0.00
PETERSON HALL	0	0	NA	0	0	\$0.00
FRIEND HALL	0	0	NA	0	0	\$0.00
KAMM HALL	0	0	NA	0	0	\$0.00
BRUMLEY APTS. #120	0	0	NA	0	0	\$0.00
BRUMLEY APTS. #121	0	0	NA	0	0	\$0.00
BRUMLEY APTS. #122	0	0	NA	0	0	\$0.00
BRUMLEY APTS. #123	0	0	NA	0	0	\$0.00
BRUMLEY APTS. #124	0	0	NA	0	0	\$0.00
BRUMLEY APTS. #125	0	0	NA	0	0	\$0.00
VILLAGE APTS. A	0	0	NA	0	0	\$0.00
VILLAGE APTS. B	0	0	NA	0	0	\$0.00
VILLAGE APTS. C	0	0	NA	0	0	\$0.00
VILLAGE APTS. D	0	0	NA	0	0	\$0.00
VILLAGES APTS. E	0	0	NA	0	0	\$0.00
VILLAGE APTS. F	0	0	NA	0	0	\$0.00
PATCHIN SUITES	0	0	NA	0	0	\$0.00
JONES SUITES	0	0	NA	0	0	\$0.00
WENTZ HALL	0	0	NA	0	0	\$0.00
PARKER HALL	0	0	NA	0	0	\$0.00
STOUT HALL	0	0	NA	0	0	\$0.00

2017 STATISTICS AND RELATED INFORMATION REGARDING FIRES IN RESIDENTIAL FACILITIES

NAME OF FACILITY	TOTAL FIRES IN FACILITY	FIRE NUMBER	CAUSE OF FIRE	NUMBER OF FIRES REQUIRING MEDICAL TREATMENT	NUMBER OF DEATHS RELATED TO A FIRE	VALUE OF PROPERTY DAMAGE OF FIRE
DRUMMOND HALL	0	0	NA	0	0	\$0.00
KERR HALL	0	0	NA	0	0	\$0.00
IBA HALL	0	0	NA	0	0	\$0.00
EAST BENNETT HALL	0	0	NA	0	0	\$0.00
WEST BENNETT HALL	0	0	NA	0	0	\$0.00
DEMAREE APTS. S-36	0	0	NA	0	0	\$0.00
DEMAREE APTS. S-37	0	0	NA	0	0	\$0.00
DEMAREE APTS. S-38	0	0	NA	0	0	\$0.00
DEMAREE APTS. S-39	0	0	NA	0	0	\$0.00
DEMAREE APTS. S-40	0	0	NA	0	0	\$0.00
DEMAREE APTS. S-41	0	0	NA	0	0	\$0.00
DEMAREE APTS. S-42	0	0	NA	0	0	\$0.00
PROSSER APTS. N-16	0	0	NA	0	0	\$0.00
PROSSER APTS. N-17	0	0	NA	0	0	\$0.00
PROSSER APTS. N-18	0	0	NA	0	0	\$0.00
PROSSER APTS. N-27	0	0	NA	0	0	\$0.00
PROSSER APTS. N-20	0	0	NA	0	0	\$0.00
PROSSER APTS. N-21	0	0	NA	0	0	\$0.00
PROSSER APTS. N-22	0	0	NA	0	0	\$0.00
PROSSER APTS. N-23	0	0	NA	0	0	\$0.00
PROSSER APTS. N-24	0	0	NA	0	0	\$0.00
PROSSER APTS. N-25	0	0	NA	0	0	\$0.00
PROSSER APTS. N-26	0	0	NA	0	0	\$0.00
PROSSER APTS. N-28	0	0	NA	0	0	\$0.00
WILLIAMS APTS. N-101	0	0	NA	0	0	\$0.00
WILLIAMS APTS. N-102	0	0	NA	0	0	\$0.00
WILLIAMS APTS. N-103	0	0	NA	0	0	\$0.00
WILLIAMS APTS. N-104	0	0	NA	0	0	\$0.00
WILLIAMS APTS. N-105	0	0	NA	0	0	\$0.00
PROSSER APTS. N-12	0	0	NA	0	0	\$0.00

2017 STATISTICS AND RELATED INFORMATION REGARDING FIRES IN RESIDENTIAL FACILITIES

NAME OF FACILITY	TOTAL FIRES IN FACILITY	FIRE NUMBER	CAUSE OF FIRE	NUMBER OF FIRES REQUIRING MEDICAL TREATMENT	NUMBER OF DEATHS RELATED TO A FIRE	VALUE OF PROPERTY DAMAGE OF FIRE
PROSSER APTS. N-13	0	0	NA	0	0	\$0.00
PROSSER APTS. N-14	0	0	NA	0	0	\$0.00
PROSSER APTS. N-15	0	0	NA	0	0	\$0.00
PROSSER APTS. N-19	0	0	NA	0	0	\$0.00
STEVENS APTS. S-70	0	0	NA	0	0	\$0.00
STEVENS APTS. S-71	0	0	NA	0	0	\$0.00
STEVENS APTS. S-72	0	0	NA	0	0	\$0.00
STEVENS APTS. S-73	0	0	NA	0	0	\$0.00
STEVENS APTS. S-74	0	0	NA	0	0	\$0.00
STEVENS APTS. S-75	0	0	NA	0	0	\$0.00
STEVENS APTS. S-76	0	0	NA	0	0	\$0.00
STEVENS APTS. S-90	0	0	NA	0	0	\$0.00
STEVENS APTS. S-91	0	0	NA	0	0	\$0.00
STEVENS APTS. S-92	0	0	NA	0	0	\$0.00
WEST APTS. S-80	0	0	NA	0	0	\$0.00
WEST APTS. S-81	0	0	NA	0	0	\$0.00
WEST APTS. S-82	0	0	NA	0	0	\$0.00
WEST APTS. S-83	0	0	NA	0	0	\$0.00
WEST APTS. S-84	0	0	NA	0	0	\$0.00
WEST APTS. S-85	0	0	NA	0	0	\$0.00
WEST APTS. S-86	0	0	NA	0	0	\$0.00
WEST APTS. S-87	0	0	NA	0	0	\$0.00
WEST APTS. S-88	0	0	NA	0	0	\$0.00
WEST APTS. S-89	0	0	NA	0	0	\$0.00
MCPHERSON HALL	0	0	NA	0	0	\$0.00
PAYNE-ELLIS HALL	0	0	NA	0	0	\$0.00
CARREKER HALL WEST	0	0	NA	0	0	\$0.00
CARREKER HALL EAST	0	0	NA	0	0	\$0.00
UNIVERSITY COMMONS NORTH	0	0	NA	0	0	\$0.00

2017 STATISTICS AND RELATED INFORMATION REGARDING FIRES IN RESIDENTIAL FACILITIES

NAME OF FACILITY	TOTAL FIRES IN FACILITY	FIRE NUMBER	CAUSE OF FIRE	NUMBER OF FIRES REQUIRING MEDICAL TREATMENT	NUMBER OF DEATHS RELATED TO A FIRE	VALUE OF PROPERTY DAMAGE OF FIRE
UNIVERSITY COMMONS SOUTH	0	0	NA	0	0	\$0.00
UNIVERSITY COMMONS WEST	0	0	NA	0	0	\$0.00
TOTAL	0	0		0	0	\$0.00



2016 STATISTICS AND RELATED INFORMATION REGARDING FIRES IN RESIDENTIAL FACILITIES

NAME OF FACILITY	TOTAL FIRES IN FACILITY	FIRE NUMBER	CAUSE OF FIRE	NUMBER OF FIRES REQUIRING MEDICAL TREATMENT	NUMBER OF DEATHS RELATED TO A FIRE	VALUE OF PROPERTY DAMAGE OF FIRE
DAVIS HALL	0	0	NA	0	0	\$0.00
MORSANI HALL	0	0	NA	0	0	\$0.00
SMITH HALL	0	0	NA	0	0	\$0.00
YOUNG HALL	0	0	NA	0	0	\$0.00
ZINK HALL	0	0	NA	0	0	\$0.00
ALLEN HALL	0	0	NA	0	0	\$0.00
BOOKER HALL	0	0	NA	0	0	\$0.00
STINCHCOMB HALL	0	0	NA	0	0	\$0.00
BOST HALL	0	0	NA	0	0	\$0.00
SITLINGTON HALL	0	0	NA	0	0	\$0.00
PETERSON HALL	0	0	NA	0	0	\$0.00
FRIEND HALL	0	0	NA	0	0	\$0.00
KAMM HALL	0	0	NA	0	0	\$0.00
BRUMLEY APTS. #120	0	0	NA	0	0	\$0.00
BRUMLEY APTS. #121	0	0	NA	0	0	\$0.00
BRUMLEY APTS. #122	0	0	NA	0	0	\$0.00
BRUMLEY APTS. #123	0	0	NA	0	0	\$0.00
BRUMLEY APTS. #124	0	0	NA	0	0	\$0.0
BRUMLEY APTS. #125	0	0	NA	0	0	\$0.00
VILLAGE APTS. A	0	0	NA	0	0	\$0.00
VILLAGE APTS. B	0	0	NA	0	0	\$0.00
VILLAGE APTS. C	0	0	NA	0	0	\$0.00
VILLAGE APTS. D	0	0	NA	0	0	\$0.00
VILLAGES APTS. E	0	0	NA	0	0	\$0.00
VILLAGE APTS. F	0	0	NA	0	0	\$0.00
PATCHIN SUITES	0	0	NA	0	0	\$0.00
JONES SUITES	0	0	NA	0	0	\$0.00
WENTZ HALL	0	0	NA	0	0	\$0.00
PARKER HALL	0	0	NA	0	0	\$0.00
STOUT HALL	0	0	NA	0	0	\$0.00

2016 STATISTICS AND RELATED INFORMATION REGARDING FIRES IN RESIDENTIAL FACILITIES

NAME OF FACILITY	TOTAL FIRES IN FACILITY	FIRE NUMBER	CAUSE OF FIRE	NUMBER OF FIRES REQUIRING MEDICAL TREATMENT	NUMBER OF DEATHS RELATED TO A FIRE	VALUE OF PROPERTY DAMAGE OF FIRE
DRUMMOND HALL	0	0	NA	0	0	\$0.00
KERR HALL	0	0	NA	0	0	\$0.00
IBA HALL	0	0	NA	0	0	\$0.00
EAST BENNETT HALL	0	0	NA	0	0	\$0.00
WEST BENNETT HALL	0	0	NA	0	0	\$0.00
DEMAREE APTS. S-36	0	0	NA	0	0	\$0.00
DEMAREE APTS. S-37	0	0	NA	0	0	\$0.00
DEMAREE APTS. S-38	0	0	NA	0	0	\$0.00
DEMAREE APTS. S-39	0	0	NA	0	0	\$0.00
DEMAREE APTS. S-40	0	0	NA	0	0	\$0.00
DEMAREE APTS. S-41	0	0	NA	0	0	\$0.00
DEMAREE APTS. S-42	0	0	NA	0	0	\$0.00
PROSSER APTS. N-16	0	0	NA	0	0	\$0.00
PROSSER APTS. N-17	0	0	NA	0	0	\$0.00
PROSSER APTS. N-18	0	0	NA	0	0	\$0.00
PROSSER APTS. N-27	0	0	NA	0	0	\$0.00
PROSSER APTS. N-20	0	0	NA	0	0	\$0.00
PROSSER APTS. N-21	0	0	NA	0	0	\$0.00
PROSSER APTS. N-22	0	0	NA	0	0	\$0.00
PROSSER APTS. N-23	0	0	NA	0	0	\$0.00
PROSSER APTS. N-24	0	0	NA	0	0	\$0.00
PROSSER APTS. N-25	0	0	NA	0	0	\$0.00
PROSSER APTS. N-26	0	0	NA	0	0	\$0.00
PROSSER APTS. N-28	0	0	NA	0	0	\$0.00
WILLIAMS APTS. N-101	0	0	NA	0	0	\$0.00
WILLIAMS APTS. N-102	0	0	NA	0	0	\$0.00
WILLIAMS APTS. N-103	0	0	NA	0	0	\$0.00
WILLIAMS APTS. N-104	0	0	NA	0	0	\$0.00
WILLIAMS APTS. N-105	0	0	NA	0	0	\$0.00
PROSSER APTS. N-12	0	0	NA	0	0	\$0.00

2016 STATISTICS AND RELATED INFORMATION REGARDING FIRES IN RESIDENTIAL FACILITIES

NAME OF FACILITY	TOTAL FIRES IN FACILITY	FIRE NUMBER	CAUSE OF FIRE	NUMBER OF FIRES REQUIRING MEDICAL TREATMENT	NUMBER OF DEATHS RELATED TO A FIRE	VALUE OF PROPERTY DAMAGE OF FIRE
PROSSER APTS. N-13	0	0	NA	0	0	\$0.00
PROSSER APTS. N-14	0	0	NA	0	0	\$0.00
PROSSER APTS. N-15	0	0	NA	0	0	\$0.00
PROSSER APTS. N-19	0	0	NA	0	0	\$0.00
STEVENS APTS. S-70	0	0	NA	0	0	\$0.00
STEVENS APTS. S-71	0	0	NA	0	0	\$0.00
STEVENS APTS. S-72	0	0	NA	0	0	\$0.00
STEVENS APTS. S-73	0	0	NA	0	0	\$0.00
STEVENS APTS. S-74	0	0	NA	0	0	\$0.00
STEVENS APTS. S-75	0	0	NA	0	0	\$0.00
STEVENS APTS. S-76	0	0	NA	0	0	\$0.00
STEVENS APTS. S-90	0	0	NA	0	0	\$0.00
STEVENS APTS. S-91	1	0	Unattended candle warmer	0	0	\$10,000.00
STEVENS APTS. S-92	0	0	NA	0	0	\$0.00
WEST APTS. S-80	0	0	NA	0	0	\$0.00
WEST APTS. S-81	0	0	NA	0	0	\$0.00
WEST APTS. S-82	0	0	NA	0	0	\$0.00
WEST APTS. S-83	0	0	NA	0	0	\$0.00
WEST APTS. S-84	0	0	NA	0	0	\$0.00
WEST APTS. S-85	0	0	NA	0	0	\$0.00
WEST APTS. S-86	0	0	NA	0	0	\$0.00
WEST APTS. S-87	0	0	NA	0	0	\$0.00
WEST APTS. S-88	0	0	NA	0	0	\$0.00
WEST APTS. S-89	0	0	NA	0	0	\$0.00
MCPHERSON HALL	0	0	NA	0	0	\$0.00
PAYNE-ELLIS HALL	0	0	NA	0	0	\$0.00
CARREKER HALL WEST	0	0	NA	0	0	\$0.00
CARREKER HALL EAST	0	0	NA	0	0	\$0.00
UNIVERSITY COMMONS NORTH	0	0	NA	0	0	\$0.00

2016 STATISTICS AND RELATED INFORMATION REGARDING FIRES IN RESIDENTIAL FACILITIES

NAME OF FACILITY	TOTAL FIRES IN FACILITY	FIRE NUMBER	CAUSE OF FIRE	NUMBER OF FIRES REQUIRING MEDICAL TREATMENT	NUMBER OF DEATHS RELATED TO A FIRE	VALUE OF PROPERTY DAMAGE OF FIRE
UNIVERSITY COMMONS SOUTH	1	0	Plastic stored in oven	0	0	\$400.00
UNIVERSITY COMMONS WEST	0	0	NA	0	0	\$0.00
TOTAL	2	0		0	0	\$10,400.00



2018 ANNUAL FIRE SAFETY REPORT ON STUDENT HOUSING FIRE SAFETY SYSTEMS AND FIRE DRILLS

FA = Proprietary Fire Alarm and Detection System monitored by OSU PD **FA(P)** = Fire Alarm and Detection System monitored by a private company other than OSU

SDAC = Hard-wired smoke alarms **SBD** = Stand Alone Battery Powered Smoke Alarms

NAME OF FACILITY	FIRE DETECTION INFORMATION	OTHER FIRE SAFETY FEATURES				
	ALARM SYSTEM	FULL SPRINKLED	PARTIALLY SPRINKLED	STANDPIPE	PORTABLE FIRE EXTINGUISHERS	FIRE DRILLS EACH YEAR
DAVIS HALL	FA	X			X	2
MORSANI HALL	FA	X			X	2
SMITH HALL	FA	X			X	2
YOUNG HALL	FA	X			X	2
ZINK HALL	FA	X		X	X	2
ALLEN HALL	FA	X		X	X	2
BOOKER HALL	FA	X		X	X	2
STINCHCOMB HALL	FA	X		X	X	2
BOST HALL	FA	X			X	2
SITLINGTON HALL	FA	X			X	2
PETERSON HALL	FA	X			X	2
FRIEND HALL	FA	X			X	2
KAMM HALL	FA	X			X	2
BRUMLEY APTS. #120	SDB					0
BRUMLEY APTS. #121	SDB					0
BRUMLEY APTS. #122	SDB					0
BRUMLEY APTS. #123	SDB					0
BRUMLEY APTS. #124	SDB					0
BRUMLEY APTS. #125	SDB					0
VILLAGE APTS. A	FA	X		X	X	2
VILLAGE APTS. B	FA	X		X	X	2
VILLAGE APTS. C	FA	X		X	X	2
VILLAGE APTS. D	FA	X		X	X	2
VILLAGES APTS. E	FA	X		X	X	2
VILLAGE APTS. F	FA	X		X	X	2
PATCHIN SUITES	FA	X		X	X	2
JONES SUITES	FA	X		X	X	2
WENTZ HALL	FA	X		X	X	2

2018 ANNUAL FIRE SAFETY REPORT ON STUDENT HOUSING FIRE SAFETY SYSTEMS AND FIRE DRILLS

NAME OF FACILITY	FIRE DETECTION INFORMATION	OTHER FIRE SAFETY FEATURES				
	ALARM SYSTEM	FULL SPRINKLED	PARTIALLY SPRINKLED	STANDPIPE	PORTABLE FIRE EXTINGUISHERS	FIRE DRILLS EACH YEAR
STOUT HALL	FA	X		X	X	2
DRUMMOND HALL	SDB / FA	X		X	X	2
KERR HALL	SDB / FA	X		X	X	2
IBA HALL	SDB / FA	X		X	X	2
EAST BENNETT HALL	SDB / FA	X		X	X	2
WEST BENNETT HALL	FA	X		X	X	2
DEMAREE APTS. S-36	SDAC / SBD				X	0
DEMAREE APTS. S-37	SDAC / SBD				X	0
DEMAREE APTS. S-38	SDAC / SBD				X	0
DEMAREE APTS. S-39	SDAC / SBD				X	0
DEMAREE APTS. S-40	SDAC / SBD				X	0
DEMAREE APTS. S-41	SDAC / SBD				X	0
DEMAREE APTS. S-42	SDAC / SBD				X	0
PROSSER APTS. N-16	SDAC / SBD				X	0
PROSSER APTS. N-17	SDAC / SBD				X	0
PROSSER APTS. N-18	SDAC / SBD				X	0
PROSSER APTS. N-27	SDAC / SBD				X	0
PROSSER APTS. N-20	SDAC / SBD				X	0
PROSSER APTS. N-21	SDAC / SBD				X	0
PROSSER APTS. N-22	SDAC / SBD				X	0
PROSSER APTS. N-23	SDAC / SBD				X	0
PROSSER APTS. N-24	SDAC / SBD				X	0
PROSSER APTS. N-25	SDAC / SBD				X	0
PROSSER APTS. N-26	SDAC / SBD				X	0
PROSSER APTS. N-28	SDAC / SBD				X	0
WILLIAMS APTS. N-101	SDAC / SBD				X	0
WILLIAMS APTS. N-102	SDAC / SBD				X	0
WILLIAMS APTS. N-103	SDAC / SBD				X	0
WILLIAMS APTS. N-104	SDAC / SBD				X	0

2018 ANNUAL FIRE SAFETY REPORT ON STUDENT HOUSING FIRE SAFETY SYSTEMS AND FIRE DRILLS

NAME OF FACILITY	FIRE DETECTION INFORMATION	OTHER FIRE SAFETY FEATURES				
	ALARM SYSTEM	FULL SPRINKLED	PARTIALLY SPRINKLED	STANDPIPE	PORTABLE FIRE EXTINGUISHERS	FIRE DRILLS EACH YEAR
WILLIAMS APTS. N-105	SDAC / SBD				X	0
PROSSER APTS. N-12	SDAC / SBD				X	0
PROSSER APTS. N-13	SDAC / SBD				X	0
PROSSER APTS. N-14	SDAC / SBD				X	0
PROSSER APTS. N-15	SDAC / SBD				X	0
PROSSER APTS. N-19	SDAC / SBD				X	0
STEVENS APTS. S-70	SDAC / SBD				X	0
STEVENS APTS. S-70	SDAC / SBD				X	0
STEVENS APTS. S-71	SDAC / SBD				X	0
STEVENS APTS. S-72	SDAC / SBD				X	0
STEVENS APTS. S-73	SDAC / SBD				X	0
STEVENS APTS. S-74	SDAC / SBD				X	0
STEVENS APTS. S-75	SDAC / SBD				X	0
STEVENS APTS. S-76	SDAC / SBD				X	0
STEVENS APTS. S-90	SDAC / SBD				X	0
STEVENS APTS. S-91	SDAC / SBD				X	0
STEVENS APTS. S-92	SDAC / SBD				X	0
WEST APTS. S-80	SDAC / SBD				X	0
WEST APTS. S-81	SDAC / SBD				X	0
WEST APTS. S-82	SDAC / SBD				X	0
WEST APTS. S-83	SDAC / SBD				X	0
WEST APTS. S-84	SDAC / SBD				X	0
WEST APTS. S-85	SDAC / SBD				X	0
WEST APTS. S-86	SDAC / SBD				X	0
WEST APTS. S-87	SDAC / SBD				X	0
WEST APTS. S-88	SDAC / SBD				X	0
WEST APTS. S-89	SDAC / SBD				X	0
MCPHERSON HALL	FA	X			X	2
PAYNE-ELLIS HALL	FA	X			X	2

2018 ANNUAL FIRE SAFETY REPORT ON STUDENT HOUSING FIRE SAFETY SYSTEMS AND FIRE DRILLS

NAME OF FACILITY	FIRE DETECTION INFORMATION	OTHER FIRE SAFETY FEATURES				
	ALARM SYSTEM	FULL SPRINKLED	PARTIALLY SPRINKLED	STANDPIPE	PORTABLE FIRE EXTINGUISHERS	FIRE DRILLS EACH YEAR
CARREKER HALL WEST	FA	X			X	2
CARREKER HALL EAST	FA	X			X	2
UNIVERSITY COMMONS NORTH	FA	X		X	X	2
UNIVERSITY COMMONS SOUTH	FA	X		X	X	2
UNIVERSITY COMMONS WEST	FA	X		X	X	2
HELMS HALL	FA	X			X	1
BEEF CATTLE ARENA	FA				X	1
SWINE EDUCATION AND RESEARCH	SDAC/SBD				X	1
ALPHA GAMMA RHO	FA(P)	X			X	2
ALPHA TAU OMEGA	FA(P)	X			X	0
BETA THETA PI	Under Construction					
DELTA TAU DELTA	FA(P)	X			X	2
FARMHOUSE	FA(P)	X			X	2
KAPPA ALPHA ORDER	FA(P)	X			X	2
KAPPA SIGMA	FA(P)	X			X	2
LAMBDA CHI ALPHA	Under Construction					
PHI DELTA THETA	FA(P)	X			X	6
PHI GAMMA DELTA	FA(P)	X			X	0
PHI KAPPA TAU	FA(P)	X			X	2
PI KAPPA ALPHA	FA(P)	X			X	2
SIGMA ALPHA EPSILON	FA(P)	X			X	0
SIGMA CHI	FA(P)	X			X	1
SIGMA NU	FA(P)	X			X	1
SIGMA PHI EPSILON	FA(P)	X			X	0
ALPHA CHI OMEGA	FA(P)	X			X	6
ALPHA DELTA PI	FA(P)	X			X	2
ALPHA OMICRON PI	FA(P)	X			X	3
ALPHA XI DELTA	FA(P)	X			X	0

2018 ANNUAL FIRE SAFETY REPORT ON STUDENT HOUSING FIRE SAFETY SYSTEMS AND FIRE DRILLS

NAME OF FACILITY	FIRE DETECTION INFORMATION	OTHER FIRE SAFETY FEATURES				
	ALARM SYSTEM	FULL SPRINKLED	PARTIALLY SPRINKLED	STANDPIPE	PORTABLE FIRE EXTINGUISHERS	FIRE DRILLS EACH YEAR
CHI OMEGA	FA(P)	X			X	1
DELTA DELTA DELTA	FA(P)	X			X	2
GAMMA PHI BETA	FA(P)	X			X	2
KAPPA ALPHA THETA	FA(P)	X			X	2
KAPPA DELTA	FA(P)	X			X	2
KAPPA KAPPA GAMMA	FA(P)	X			X	2
PHI MU	FA(P)	X			X	2
PI BETA PHI	FA(P)	X			X	2
ZETA TAU ALPHA	FA(P)	X			X	0

FA = Proprietary Fire Alarm and Detection System monitored by OSU PD **FA(P)** = Fire Alarm and Detection System monitored by a private company other than OSU

SDAC = Hard-wired smoke alarms **SBD** = Stand Alone Battery Powered Smoke Alarms



2017 ANNUAL FIRE SAFETY REPORT ON STUDENT HOUSING FIRE SAFETY SYSTEMS AND FIRE DRILLS

FA = Proprietary Fire Alarm and Detection System monitored by OSU PD **SDAC** = Hard-wired smoke alarms **SBD** = Stand Alone Battery Powered Smoke Alarms

NAME OF FACILITY	FIRE DETECTION INFORMATION	OTHER FIRE SAFETY FEATURES				
	ALARM SYSTEM	FULL SPRINKLED	PARTIALLY SPRINKLED	STANDPIPE	PORTABLE FIRE EXTINGUISHERS	FIRE DRILLS EACH YEAR
DAVIS HALL	FA	X			X	2
MORSANI HALL	FA	X			X	2
SMITH HALL	FA	X			X	2
YOUNG HALL	FA	X			X	2
ZINK HALL	FA	X		X	X	2
ALLEN HALL	FA	X		X	X	2
BOOKER HALL	FA	X		X	X	2
STINCHCOMB HALL	FA	X		X	X	2
BOST HALL	FA	X			X	2
SITLINGTON HALL	FA	X			X	2
PETERSON HALL	FA	X			X	2
FRIEND HALL	FA	X			X	2
KAMM HALL	FA	X			X	2
BRUMLEY APTS. #120	SDB					0
BRUMLEY APTS. #121	SDB					0
BRUMLEY APTS. #122	SDB					0
BRUMLEY APTS. #123	SDB					0
BRUMLEY APTS. #124	SDB					0
BRUMLEY APTS. #125	SDB					0
VILLAGE APTS. A	FA	X		X	X	2
VILLAGE APTS. B	FA	X		X	X	2
VILLAGE APTS. C	FA	X		X	X	2
VILLAGE APTS. D	FA	X		X	X	2
VILLAGES APTS. E	FA	X		X	X	2
VILLAGE APTS. F	FA	X		X	X	2
PATCHIN SUITES	FA	X		X	X	2
JONES SUITES	FA	X		X	X	2
WENTZ HALL	FA	X		X	X	2

2017 ANNUAL FIRE SAFETY REPORT ON STUDENT HOUSING FIRE SAFETY SYSTEMS AND FIRE DRILLS

NAME OF FACILITY	FIRE DETECTION INFORMATION	OTHER FIRE SAFETY FEATURES				
	ALARM SYSTEM	FULL SPRINKLED	PARTIALLY SPRINKLED	STANDPIPE	PORTABLE FIRE EXTINGUISHERS	FIRE DRILLS EACH YEAR
STOUT HALL	FA	X		X	X	2
DRUMMOND HALL	SDB / FA	X		X	X	2
KERR HALL	SDB / FA	X		X	X	2
IBA HALL	SDB / FA	X		X	X	2
EAST BENNETT HALL	SDB / FA	X		X	X	2
WEST BENNETT HALL	FA	X		X	X	2
DEMAREE APTS. S-36	SDAC / SBD				X	0
DEMAREE APTS. S-37	SDAC / SBD				X	0
DEMAREE APTS. S-38	SDAC / SBD				X	0
DEMAREE APTS. S-39	SDAC / SBD				X	0
DEMAREE APTS. S-40	SDAC / SBD				X	0
DEMAREE APTS. S-41	SDAC / SBD				X	0
DEMAREE APTS. S-42	SDAC / SBD				X	0
PROSSER APTS. N-16	SDAC / SBD				X	0
PROSSER APTS. N-17	SDAC / SBD				X	0
PROSSER APTS. N-18	SDAC / SBD				X	0
PROSSER APTS. N-27	SDAC / SBD				X	0
PROSSER APTS. N-20	SDAC / SBD				X	0
PROSSER APTS. N-21	SDAC / SBD				X	0
PROSSER APTS. N-22	SDAC / SBD				X	0
PROSSER APTS. N-23	SDAC / SBD				X	0
PROSSER APTS. N-24	SDAC / SBD				X	0
PROSSER APTS. N-25	SDAC / SBD				X	0
PROSSER APTS. N-26	SDAC / SBD				X	0
PROSSER APTS. N-28	SDAC / SBD				X	0
WILLIAMS APTS. N-101	SDAC / SBD				X	0
WILLIAMS APTS. N-102	SDAC / SBD				X	0
WILLIAMS APTS. N-103	SDAC / SBD				X	0
WILLIAMS APTS. N-104	SDAC / SBD				X	0

2017 ANNUAL FIRE SAFETY REPORT ON STUDENT HOUSING FIRE SAFETY SYSTEMS AND FIRE DRILLS

NAME OF FACILITY	FIRE DETECTION INFORMATION	OTHER FIRE SAFETY FEATURES				
	ALARM SYSTEM	FULL SPRINKLED	PARTIALLY SPRINKLED	STANDPIPE	PORTABLE FIRE EXTINGUISHERS	FIRE DRILLS EACH YEAR
WILLIAMS APTS. N-105	SDAC / SBD				X	0
PROSSER APTS. N-12	SDAC / SBD				X	0
PROSSER APTS. N-13	SDAC / SBD				X	0
PROSSER APTS. N-14	SDAC / SBD				X	0
PROSSER APTS. N-15	SDAC / SBD				X	0
PROSSER APTS. N-19	SDAC / SBD				X	0
STEVENS APTS. S-70	SDAC / SBD				X	0
STEVENS APTS. S-70	SDAC / SBD				X	0
STEVENS APTS. S-71	SDAC / SBD				X	0
STEVENS APTS. S-72	SDAC / SBD				X	0
STEVENS APTS. S-73	SDAC / SBD				X	0
STEVENS APTS. S-74	SDAC / SBD				X	0
STEVENS APTS. S-75	SDAC / SBD				X	0
STEVENS APTS. S-76	SDAC / SBD				X	0
STEVENS APTS. S-90	SDAC / SBD				X	0
STEVENS APTS. S-91	SDAC / SBD				X	0
STEVENS APTS. S-92	SDAC / SBD				X	0
WEST APTS. S-80	SDAC / SBD				X	0
WEST APTS. S-81	SDAC / SBD				X	0
WEST APTS. S-82	SDAC / SBD				X	0
WEST APTS. S-83	SDAC / SBD				X	0
WEST APTS. S-84	SDAC / SBD				X	0
WEST APTS. S-85	SDAC / SBD				X	0
WEST APTS. S-86	SDAC / SBD				X	0
WEST APTS. S-87	SDAC / SBD				X	0
WEST APTS. S-88	SDAC / SBD				X	0
WEST APTS. S-89	SDAC / SBD				X	0
MCPHERSON HALL	FA	X			X	2
PAYNE-ELLIS HALL	FA	X			X	2

2017 ANNUAL FIRE SAFETY REPORT ON STUDENT HOUSING FIRE SAFETY SYSTEMS AND FIRE DRILLS

NAME OF FACILITY	FIRE DETECTION INFORMATION	OTHER FIRE SAFETY FEATURES				
	ALARM SYSTEM	FULL SPRINKLED	PARTIALLY SPRINKLED	STANDPIPE	PORTABLE FIRE EXTINGUISHERS	FIRE DRILLS EACH YEAR
CARREKER HALL WEST	FA	X			X	2
CARREKER HALL EAST	FA	X			X	2
UNIVERSITY COMMONS NORTH	FA	X		X	X	2
UNIVERSITY COMMONS SOUTH	FA	X		X	X	2
UNIVERSITY COMMONS WEST	FA	X		X	X	2

FA = Proprietary Fire Alarm and Detection System monitored by OSU PD **SDAC** = Hard-wired smoke alarms **SBD** = Stand Alone Battery Powered Smoke Alarms



2016 ANNUAL FIRE SAFETY REPORT ON STUDENT HOUSING FIRE SAFETY SYSTEMS AND FIRE DRILLS

FA = Proprietary Fire Alarm and Detection System monitored by OSU PD **SDAC** = Hard-wired smoke alarms **SBD** = Stand Alone Battery Powered Smoke Alarms

NAME OF FACILITY	FIRE DETECTION INFORMATION	OTHER FIRE SAFETY FEATURES				
	ALARM SYSTEM	FULL SPRINKLED	PARTIALLY SPRINKLED	STANDPIPE	PORTABLE FIRE EXTINGUISHERS	FIRE DRILLS EACH YEAR
DAVIS HALL	FA	X			X	2
MORSANI HALL	FA	X			X	2
SMITH HALL	FA	X			X	2
YOUNG HALL	FA	X			X	2
ZINK HALL	FA	X		X	X	2
ALLEN HALL	FA	X		X	X	2
BOOKER HALL	FA	X		X	X	2
STINCHCOMB HALL	FA	X		X	X	2
BOST HALL	FA	X			X	2
SITLINGTON HALL	FA	X			X	2
PETERSON HALL	FA	X			X	2
FRIEND HALL	FA	X			X	2
KAMM HALL	FA	X			X	2
BRUMLEY APTS. #120	SDB					0
BRUMLEY APTS. #121	SDB					0
BRUMLEY APTS. #122	SDB					0
BRUMLEY APTS. #123	SDB					0
BRUMLEY APTS. #124	SDB					0
BRUMLEY APTS. #125	SDB					0
VILLAGE APTS. A	FA	X		X	X	2
VILLAGE APTS. B	FA	X		X	X	2
VILLAGE APTS. C	FA	X		X	X	2
VILLAGE APTS. D	FA	X		X	X	2
VILLAGES APTS. E	FA	X		X	X	2
VILLAGE APTS. F	FA	X		X	X	2
PATCHIN SUITES	FA	X		X	X	2
JONES SUITES	FA	X		X	X	2
WENTZ HALL	FA	X		X	X	2
PARKER HALL	FA	X		X	X	2

2016 ANNUAL FIRE SAFETY REPORT ON STUDENT HOUSING FIRE SAFETY SYSTEMS AND FIRE DRILLS

NAME OF FACILITY	FIRE DETECTION INFORMATION	OTHER FIRE SAFETY FEATURES				
	ALARM SYSTEM	FULL SPRINKLED	PARTIALLY SPRINKLED	STANDPIPE	PORTABLE FIRE EXTINGUISHERS	FIRE DRILLS EACH YEAR
STOUT HALL	FA	X		X	X	2
DRUMMOND HALL	SDB / FA	X		X	X	2
KERR HALL	SDB / FA	X		X	X	2
IBA HALL	SDB / FA	X		X	X	2
EAST BENNETT HALL	SDB / FA	X		X	X	2
WEST BENNETT HALL	FA	X		X	X	2
DEMAREE APTS. S-36	SDAC / SBD				X	0
DEMAREE APTS. S-37	SDAC / SBD				X	0
DEMAREE APTS. S-38	SDAC / SBD				X	0
DEMAREE APTS. S-39	SDAC / SBD				X	0
DEMAREE APTS. S-40	SDAC / SBD				X	0
DEMAREE APTS. S-41	SDAC / SBD				X	0
DEMAREE APTS. S-42	SDAC / SBD				X	0
PROSSER APTS. N-16	SDAC / SBD				X	0
PROSSER APTS. N-17	SDAC / SBD				X	0
PROSSER APTS. N-18	SDAC / SBD				X	0
PROSSER APTS. N-27	SDAC / SBD				X	0
PROSSER APTS. N-20	SDAC / SBD				X	0
PROSSER APTS. N-21	SDAC / SBD				X	0
PROSSER APTS. N-22	SDAC / SBD				X	0
PROSSER APTS. N-23	SDAC / SBD				X	0
PROSSER APTS. N-24	SDAC / SBD				X	0
PROSSER APTS. N-25	SDAC / SBD				X	0
PROSSER APTS. N-26	SDAC / SBD				X	0
PROSSER APTS. N-28	SDAC / SBD				X	0
WILLIAMS APTS. N-101	SDAC / SBD				X	0
WILLIAMS APTS. N-102	SDAC / SBD				X	0
WILLIAMS APTS. N-103	SDAC / SBD				X	0
WILLIAMS APTS. N-104	SDAC / SBD				X	0

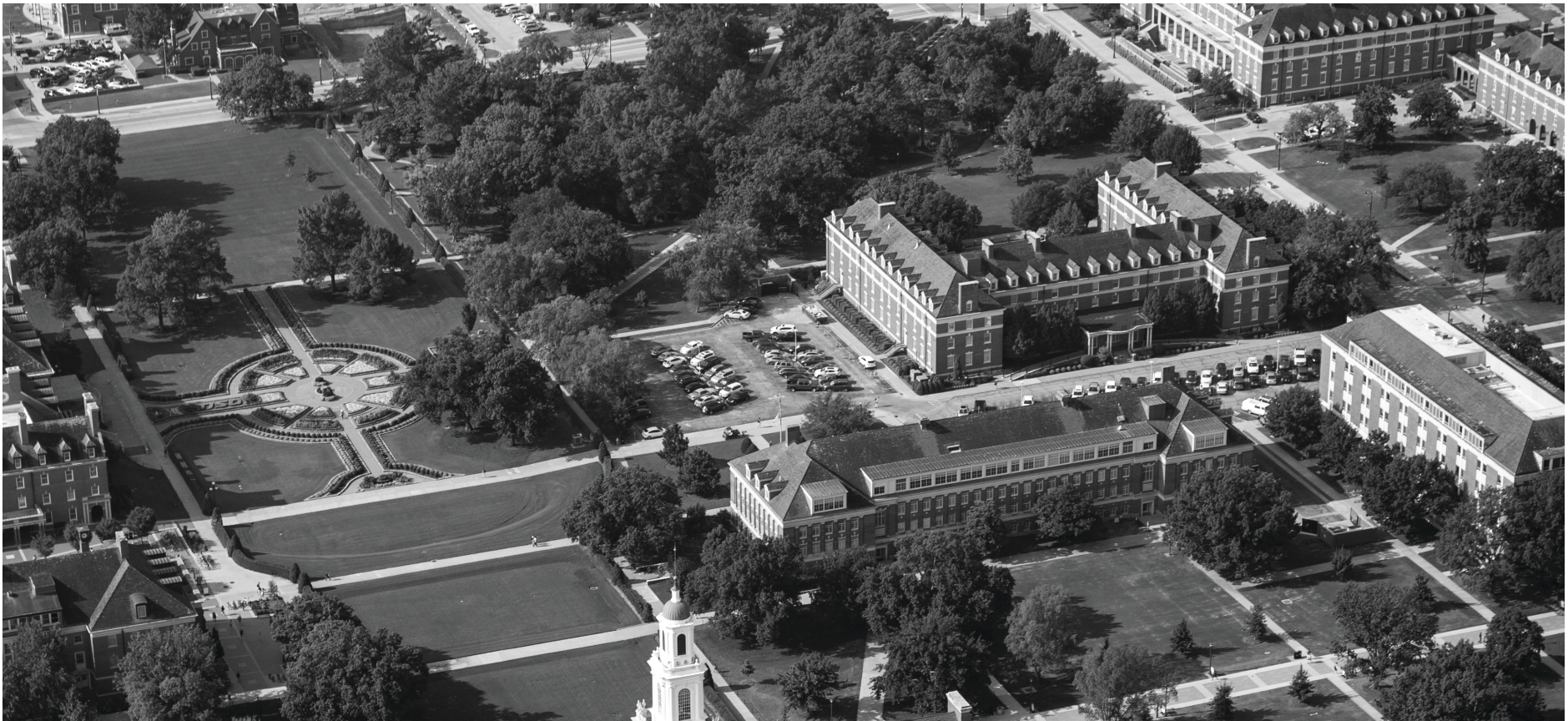
2016 ANNUAL FIRE SAFETY REPORT ON STUDENT HOUSING FIRE SAFETY SYSTEMS AND FIRE DRILLS

NAME OF FACILITY	FIRE DETECTION INFORMATION	OTHER FIRE SAFETY FEATURES				
	ALARM SYSTEM	FULL SPRINKLED	PARTIALLY SPRINKLED	STANDPIPE	PORTABLE FIRE EXTINGUISHERS	FIRE DRILLS EACH YEAR
WILLIAMS APTS. N-105	SDAC / SBD				X	0
PROSSER APTS. N-12	SDAC / SBD				X	0
PROSSER APTS. N-13	SDAC / SBD				X	0
PROSSER APTS. N-14	SDAC / SBD				X	0
PROSSER APTS. N-15	SDAC / SBD				X	0
PROSSER APTS. N-19	SDAC / SBD				X	0
STEVENS APTS. S-70	SDAC / SBD				X	0
STEVENS APTS. S-71	SDAC / SBD				X	0
STEVENS APTS. S-72	SDAC / SBD				X	0
STEVENS APTS. S-73	SDAC / SBD				X	0
STEVENS APTS. S-74	SDAC / SBD				X	0
STEVENS APTS. S-75	SDAC / SBD				X	0
STEVENS APTS. S-76	SDAC / SBD				X	0
STEVENS APTS. S-90	SDAC / SBD				X	0
STEVENS APTS. S-91	SDAC / SBD				X	0
STEVENS APTS. S-92	SDAC / SBD				X	0
WEST APTS. S-80	SDAC / SBD				X	0
WEST APTS. S-81	SDAC / SBD				X	0
WEST APTS. S-82	SDAC / SBD				X	0
WEST APTS. S-83	SDAC / SBD				X	0
WEST APTS. S-84	SDAC / SBD				X	0
WEST APTS. S-85	SDAC / SBD				X	0
WEST APTS. S-86	SDAC / SBD				X	0
WEST APTS. S-87	SDAC / SBD				X	0
WEST APTS. S-88	SDAC / SBD				X	0
WEST APTS. S-89	SDAC / SBD				X	0
MCPHERSON HALL	FA	X			X	2
PAYNE-ELLIS HALL	FA	X			X	2
CARREKER HALL WEST	FA	X			X	2

2016 ANNUAL FIRE SAFETY REPORT ON STUDENT HOUSING FIRE SAFETY SYSTEMS AND FIRE DRILLS

NAME OF FACILITY	FIRE DETECTION INFORMATION	OTHER FIRE SAFETY FEATURES				
	ALARM SYSTEM	FULL SPRINKLED	PARTIALLY SPRINKLED	STANDPIPE	PORTABLE FIRE EXTINGUISHERS	FIRE DRILLS EACH YEAR
CARREKER HALL EAST	FA	X			X	2
UNIVERSITY COMMONS NORTH	FA	X		X	X	2
UNIVERSITY COMMONS SOUTH	FA	X		X	X	2
UNIVERSITY COMMONS WEST	FA	X		X	X	2

FA = Proprietary Fire Alarm and Detection System monitored by OSU PD **SDAC** = Hard-wired smoke alarms **SBD** = Stand Alone Battery Powered Smoke Alarms



Other Resources

OSU CAMPUS RESOURCES

Blue Emergency Phones	911
Community Policing Programs	405-744-4242
Crime Prevention Programs	405-744-5191
Crime Stoppers.....	405-744-Tips (405-744-8477)
Emergency (Police, Fire, Ambulance).....	911
Emergency Operations Center.....	405-744-4362 or 405-744-6523
Environmental Health and Safety	405-744-7241
Lost & Found	405-744-6527
OSU Public Safety Web Page	police.okstate.edu
OSU Public Safety Facebook	facebook.com/okstatepd
Follow Us On Twitter	@Okstatepd
Police Non-Emergency (Campus Only)	311 or 405-744-6523
Psychological Services Center.....	405-744-5975
Student Conduct Education and Administration	405-744-5470
Student Disability Services	405-744-7116
University Counseling Services.....	405-744-5472
University Health Services.....	405-744-7665
Sexual Assault Victim Advocates	405-564-2129

CITY OF STILLWATER RESOURCES

Emergency (Police, Fire, Ambulance).....	911
Stillwater Police Non-Emergency	405-372-4171
Payne County Sheriff's Department	405-372-4522
Payne County District Attorney	405-372-4883
Reach-Out Hotline (Suicide Prevention)	1-800-522-9054

Stillwater Domestic Violence Center, Wings of Hope.....	405-377-2344
(24-Hour Crisis Line)	405-624-3020
Stillwater Medical Center.....	405-372-1480



OKLAHOMA STATE UNIVERSITY



safety.okstate.edu

Revision 1: On Oct. 16, 2019: Arson statistic updated to correct clerical error.

Revision 2: On Nov. 26, 2019: Motor vehicle theft did not occur on Clery geography. Statistic removed. Unfounded reports changed to 1.

OKLAHOMA STATE UNIVERSITY, IN COMPLIANCE WITH TITLE VI AND VII OF THE CIVIL RIGHTS ACT OF 1964, EXECUTIVE ORDER 11246 AS AMENDED, AND TITLE IX OF THE EDUCATION AMENDMENTS OF 1972 (HIGHER EDUCATION ACT), THE AMERICANS WITH DISABILITIES ACT OF 1990, AND OTHER FEDERAL AND STATE LAWS AND REGULATIONS, DOES NOT DISCRIMINATE ON THE BASIS OF RACE, COLOR, NATIONAL ORIGIN, GENETIC INFORMATION, SEX, AGE, SEXUAL ORIENTATION, GENDER IDENTITY, RELIGION, DISABILITY, OR STATUS AS A VETERAN, IN ANY OF ITS POLICIES, PRACTICES OR PROCEDURES. THIS PROVISION INCLUDES, BUT IS NOT LIMITED TO ADMISSIONS, EMPLOYMENT, FINANCIAL AID, AND EDUCATIONAL SERVICES. THE DIRECTOR OF EQUAL OPPORTUNITY, 408 WHITEHURST, OSU, STILLWATER, OK 74078-1035; PHONE 405-744-5371; EMAIL: EOO@OKSTATE.EDU HAS BEEN DESIGNATED TO HANDLE INQUIRIES REGARDING NON-DISCRIMINATION POLICIES. ANY PERSON (STUDENT, FACULTY, OR STAFF) WHO BELIEVES THAT DISCRIMINATORY PRACTICES HAVE BEEN ENGAGED IN BASED ON GENDER MAY DISCUSS HIS OR HER CONCERNS AND FILE INFORMAL OR FORMAL COMPLAINTS OF POSSIBLE VIOLATIONS OF TITLE IX WITH OSU'S TITLE IX COORDINATOR 405-744-7607.